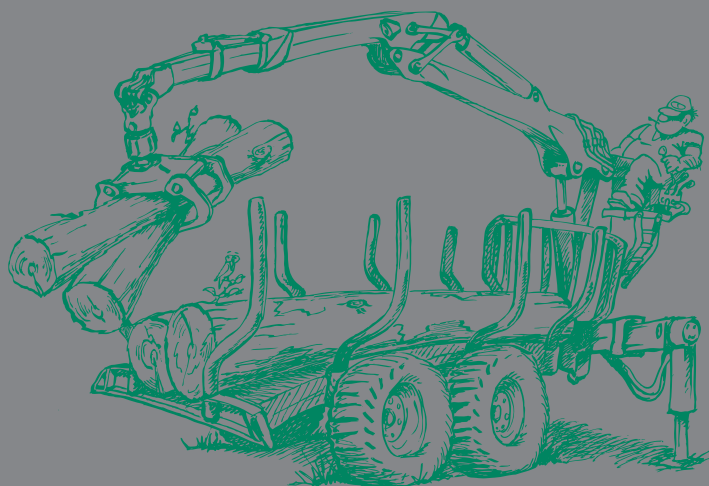
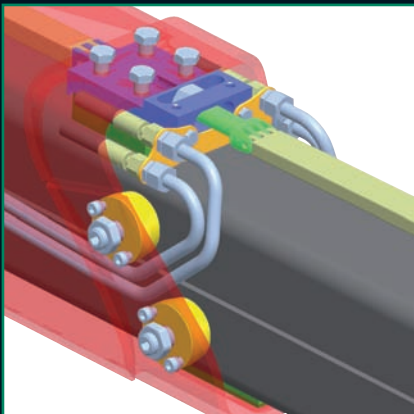


OFF ROAD



EPSILON PALFINGER

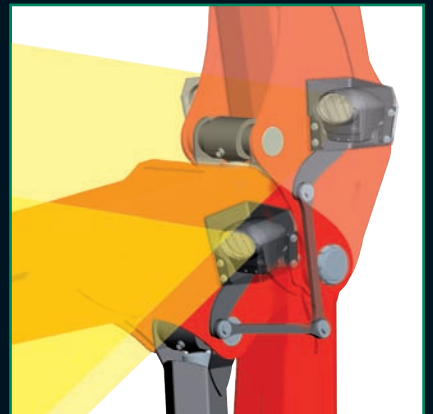
DESIGNS THE DIFFERENCE



EPSCOPE



EPSLINK

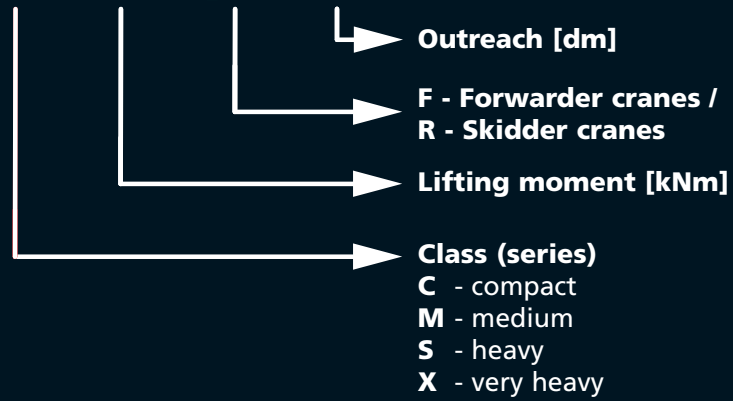


EPSLIGHT



TYPE DESIGNATION

S 110 F 86



PRODUCT OVERVIEW

crane type	rotator					grabs			page
	RB06F	G121	G141	FG27	FG37	FG43S	FG57X	FG31R	
F C50F, C60F									5
M70F, M80F									6-7
S100F, S110F									6-7
X120F, X140F									7

crane type	rotator					grabs			page
	RB06F	G121	G141	FG27	FG37	FG43S	FG57X	FG31R	
R M70R									8-9
M80R, M90R									8-9
S110R, S120R									8-9

equipment	4,10
grabs	11

Available combinations

Epsilon the Professional's Choice

EPSCOPE

- Patented double telescope with extension cylinder and hose equipment mounted inside protected
- Compact construction
- No risk of damage
- No getting caught on branches
- Simple change of hoses
- Especially developed hose quality
- Hoses guided in separate chambers
- Maintenance-free hose and chain rollers with ball bearings
- Robust chain drive for extreme tensions and loads

EPSLINK

- Patented Link- MPB swing damper – rotator combination
- Robust 4-eye-cast link
- Inlaid protected highly abrasion-resistant and service-friendly hoses

EPSSLIGHT

- Spot lights follow working area of crane by means of sequence control.
- Cables inside protected
- Optional Xenon / LED spot lights

C50F S100F
C60F S110F
M70F X120F
M80F X140F

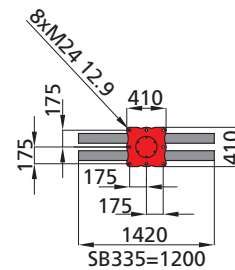
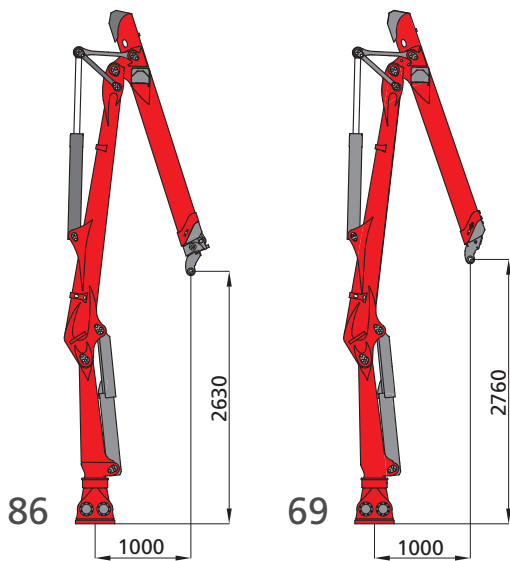
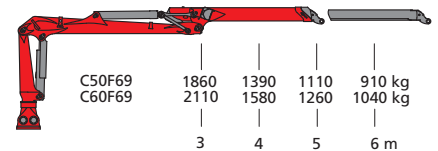
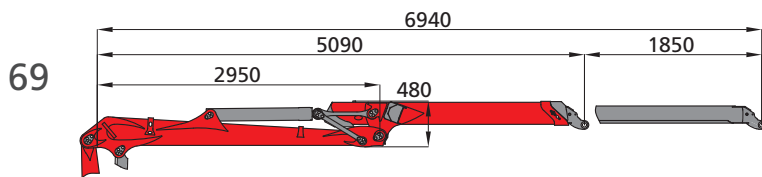
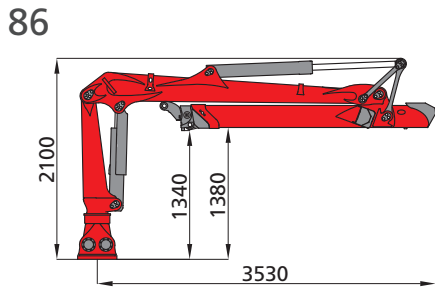
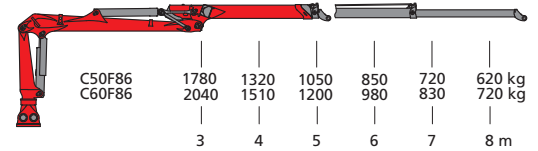
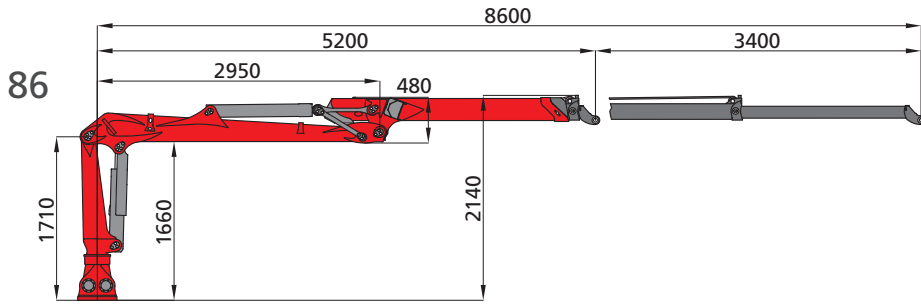


M70R S110R
M80R S120R
M90R

Standard equipment		Forwarder cranes				Skidder cranes			Page
		C50F C60F	M70F M80F	S100F S110F	X120F X140F	M70R	M80R M90R	S110R S120R	
Solid double rack slewing system with end stroke suppression, o.l.p. valve and 385° slewing angle		-	■	■	-	■	■	■	
Solid double rack slewing system with end stroke suppression, o.l.p. valve and 380° slewing angle		-	-	-	■	-	-	-	
Solid double rack slewing system with end stroke suppression, 425° slewing angle		■	-	-	-	-	-	-	
Dead point above over load protection valve		-	■	■	■	■	■	■	
Biological oil Panolin HLP Synth 46		■	■	■	■	■	■	■	
Coating RAL 3020		■	■	■	■	■	■	■	
Main boom with solid main boom strap below - no additional protection necessary		-	■	■	■	-	-	-	
Main cylinder protection guard		■	■	■	■	■	■	■	
EPSCOPE double telescopic boom system, all parts protected and mounted inside		■	■	■	■	■	■	■	2
EPSLINK Epsilon knuckle set with inlaid protected hoses and hose set between telescopic boom - rotator		■	■	■	■	■	■	■	2
EPSLIGHT spot lights, mounted and completely wired, consisting of:									2
• 2 Halogen lights mounted on main boom, light follows the working area, sequence control by linkage		-	■	■	■	-	-	-	
• 2 Halogen spot lights on outer boom		■	■	■	■	■	■	■	
Rotator Indexator G141, incl. protection cover for hoses		-	-	■	■	-	-	■	
Rotator Indexator G121, incl. protection cover for hoses		-	■	-	-	■	-	-	
Rotator EPSILON RB06F 6t, incl. protection cover for hoses		■	-	-	-	-	-	-	
Indexator MPB-swing damper		-	■	■	■	■	■	■	
24V 24 volt execution		■	■	■	■	■	■	■	
Special equipment									
KM	fixed heel	-	□	□	□	□	□	□	10
XE	2 Xenon spot lights mounted on main boom, lights follow the working area, sequence controlled	-	□	□	□	-	-	-	10
LED	2 x LED spot lights on outer boom	□	-	-	-	□	□	□	10
LED	4 x LED spot lights (2 x Epslight on main boom and 2 x on outer boom)	-	□	-	□	-	-	-	10
RAL	special colour RAL	□	□	□	□	□	□	□	12
SLP	substitute hose set (4xtelescopic boom, 4xlink-rotator)	□	□	□	□	□	□	□	
STV	valve for floating position (not in combination with DM9F or DM10F)	-	□	□	□	□	□	□	10
SPC	Slewing position control	-	□	□	□	-	-	-	
MO	mineral oil OMV PALF-FIRST-FILL 32 ISO VG	□	□	□	□	□	□	□	
12V	12 Volt volt execution	□	□	□	□	□	□	□	
Crane column & slewing system									
N	short crane column for forwarder cranes (not available in combination with GIRX39 and S-class)	-	□	□	□	-	-	-	6 / 7
N	short crane column for skidder crane	-	-	-	-	□	-	-	8
SB205	slewing angle 205°	-	□	□	-	□	□	□	6 / 8
SB240	slewing angle 240°	-	□	□	-	□	□	□	6 / 8
SB335	slewing angle 335°	□	-	-	-	-	-	-	5
Crane base & stabilization									
GT	tiltable base incl. 2x tilt cylinders and bolts for cylinder-crane base	-	□	□	□	-	-	-	67/10
GIRX41	integrated stabilizer "RX41" with base and slewing system out of C series "Epsolution"	□	-	-	-	-	-	-	10
GIRX39	integrated stabilizer "RX39" with base and slewing system out of M series "Epsolution"	-	□	-	-	-	-	-	10
GIRX39	integrated stabilizer "RX39" with base and slewing system out of Q series "Epsolution"	-	-	□	-	-	-	-	10
SRX39	stabilizer beam 3810mm out of M series "Epsolution" (loose)	-	□	-	-	-	-	-	10
TVP	170mm longer stabilizer with pendulum plates for GIRX39, GIRX41 and SRX39	□	□	□	-	-	-	-	10
TOG	dead point opposite to over load protection valve (standard with GIRX)	-	□	□	□	□	□	□	
TOU	dead point above stabilizer beam (at GIRX)	□	□	□	-	-	-	-	
SFD38	flap down stabilizers with 4280mm stabilizer width (loose)	□	□	-	-	-	-	-	10
Control									
PROF1	Prof1 Joysticks Danfoss (version 162F1128 and 162F1112, wired)	□	□	□	-	-	-	-	11
DM8H	Danfoss PVG32 load sensing, pressure set, 8 functions, without control	□	-	-	-	-	-	-	11
DM9F	Danfoss PVG32 load sensing, pressure set, 9 functions, without control	-	□	□	-	-	-	-	11
DM10F	Danfoss PVG32 load sensing, pressure set, 10 functions, without control	-	□	□	-	-	-	-	11
HS	top seat mounted without control	□	-	-	-	-	-	-	
swing damper, rotator, link									
BK118	MPB 100 swing damper, G121 rotator, reinforced knuckle set	□	-	-	-	-	-	-	10
BK120	G121 rotator, reinforced knuckle set	□	-	-	-	-	-	-	
Mounting bolts									
BK005	mounting bolts 8 pc M24x1000 for GIRX41/SFD38/SRX39	□	□	-	-	-	-	-	
BK013	mounting bolts 8 pc M30x1200 for GIRX39	-	-	□	-	-	-	-	
BK040	mounting bolts 8 pc M24x100 12.9	-	□	-	-	□	□	-	
BK041	mounting bolts 10 pc M24x100 12.9	-	-	□	-	-	-	□	
BK117	set of bolts 1pc ø120, 2pcs ø60 for tilt base GT, without locking nuts	-	□	□	□	-	-	-	
Grabs									
FG27	timber grab 0,26m²	□	□	-	-	-	-	-	11
FG37	timber grab 0,36m²	□	□	□	-	□	-	-	11
FG43S	timber grab 0,4m²	-	-	□	□	□	□	□	11
FG57X	timber grab 0,5m²	-	-	□	□	-	-	□	11
FG31R	logging waste & refuse grab 0,36m²	□	□	□	□	-	-	-	11

FORWARDER CRANES

C-CLASS

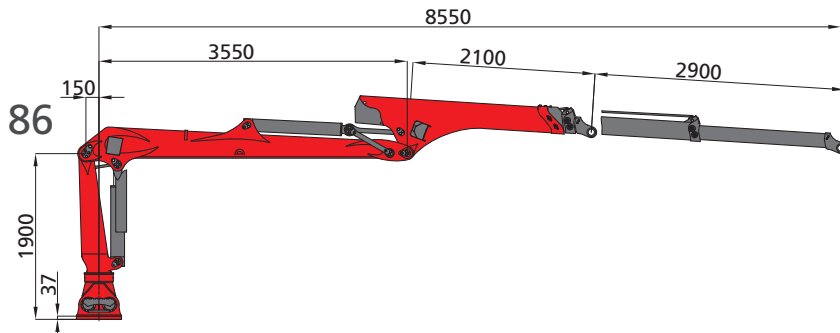


crane type	C-class			
	C50F		C60F	
boom system	69	86	69	86
lifting moment [kNm]	76		82	
lifting moment net [kNm]	56	54	63	61
max. outreach [m]	6,9	8,6	6,9	8,6
slewing torque net [kNm]	18		20	
slewing angle [°]	425		425	
dead weight without link / rotator [kg]	1060	1140	1090	1170
operating pressure [bar]	180		200	
recommended pump capacity [l/min]	60-80		60-80	
rotator (EPSILON)	RB06F		RB06F	

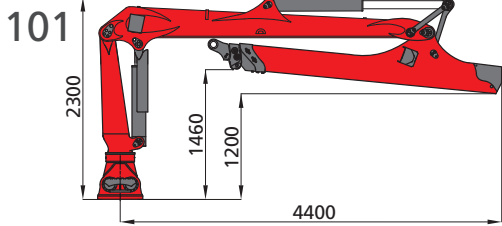
Weight of standard crane, incl. oil, spot lights and cylinder protection, without link and rotator; material tolerance +/- 5%; lifted weight, net without accessories

FORWARDER CRANES

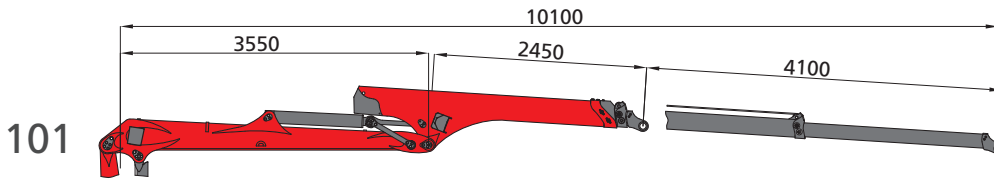
M-CLASS / S-CLASS



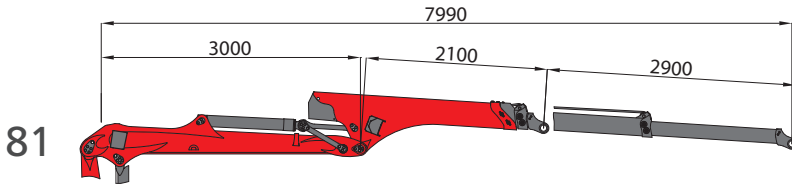
M70F86	2280	1700	1350	1100	930	800 kg
M80F86	2620	1960	1550	1280	1080	930 kg
S100F86	3010	2250	1780	1480	1250	1080 kg
S110F86	3470	2590	2060	1700	1440	1200 kg
	3	4	5	6	7	8 m



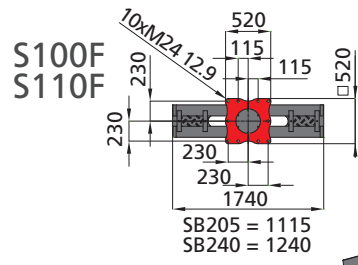
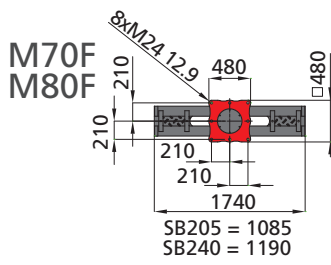
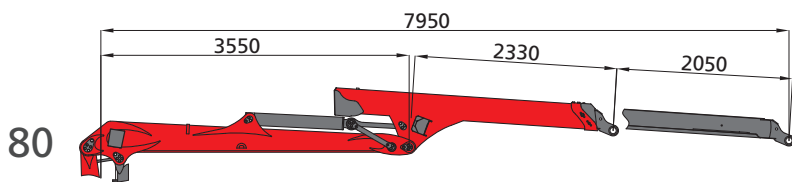
M70F101	2160	1610	1280	1070	890	760	660	540 kg
M80F101	2510	1880	1500	1240	1040	890	780	660 kg
S100F101	2860	2140	1710	1420	1190	1030	900	770 kg
S110F101	3330	2490	1980	1640	1380	1190	1030	900 kg
	3	4	5	6	7	8	9	10 m



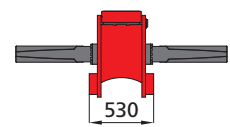
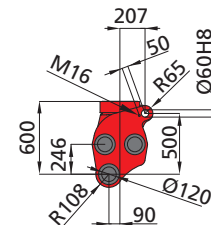
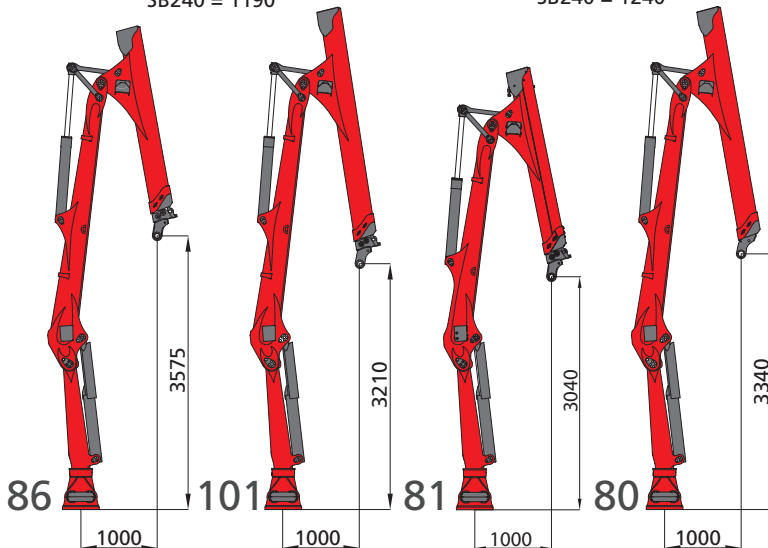
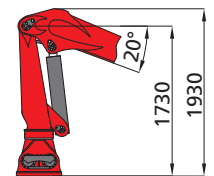
M70F81	2380	1770	1400	1150	980 kg
M80F81	2730	2040	1620	1330	1130 kg
	3	4	5	6	7 m



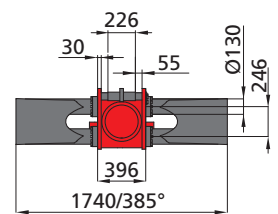
M70F80	2270	1690	1340	1120	950 kg
M80F80	2620	1960	1560	1300	1100 kg
S100F80	3020	2260	1810	1510	1280 kg
S110F80	3460	2600	2080	1740	1480 kg
	3	4	5	6	7 m



N
short column

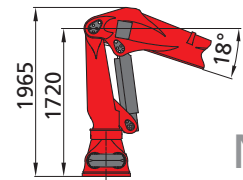
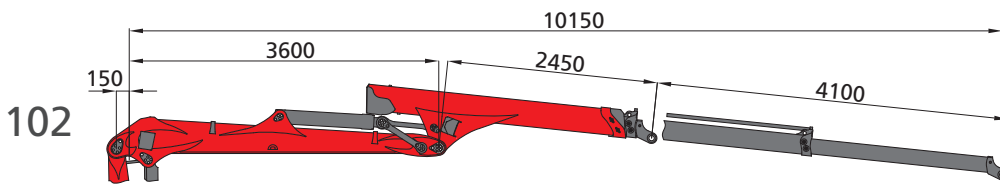
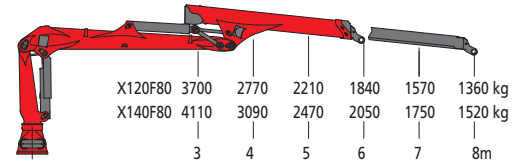
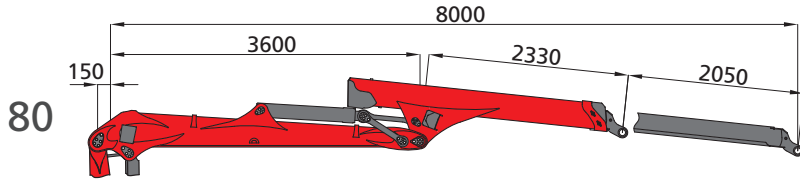
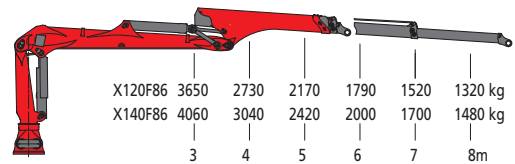
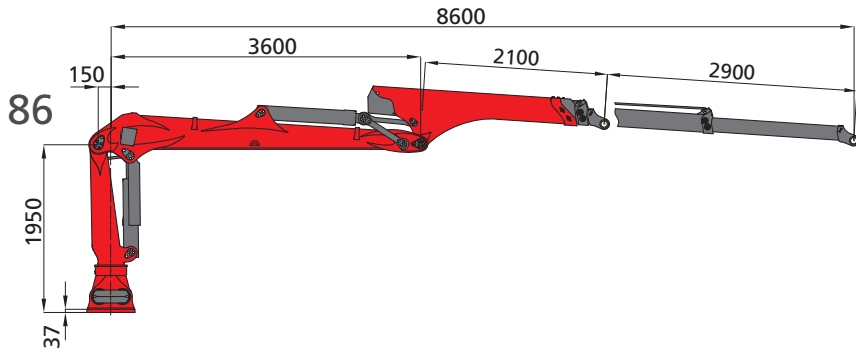


M-class
GT
Tilt able crane base

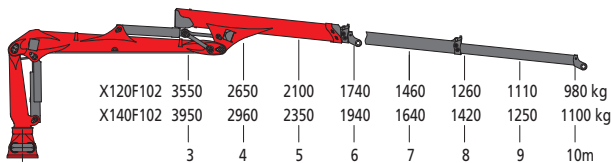


FORWARDER CRANES

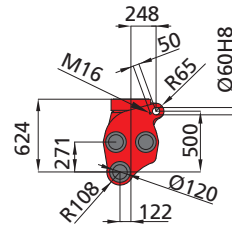
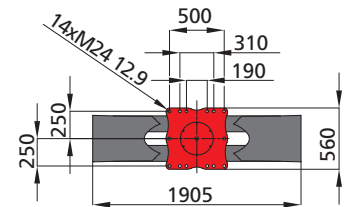
X-CLASS



N
short column

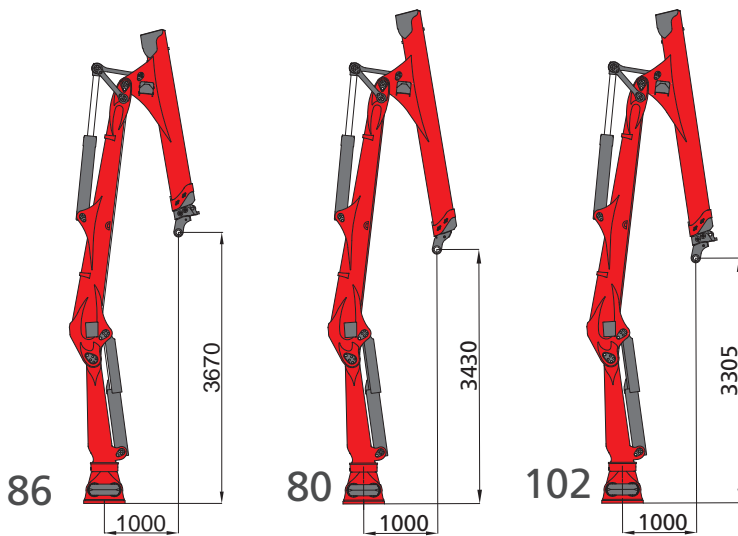
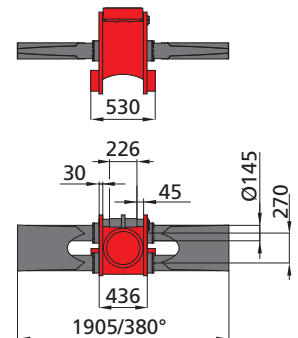


X120F
X140F



S-class
X-class
GT

Tilt able crane base

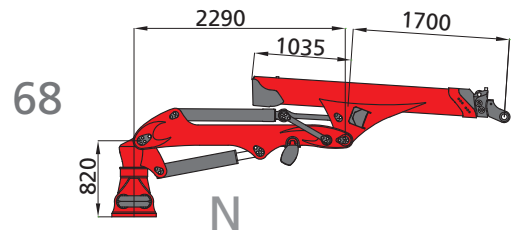
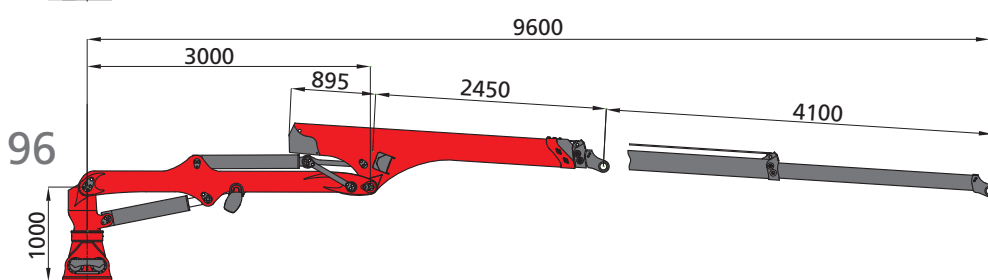
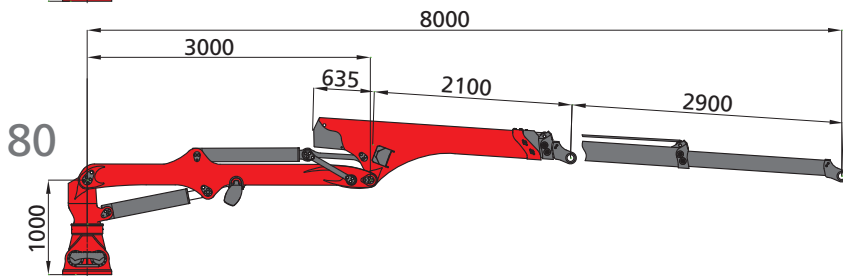
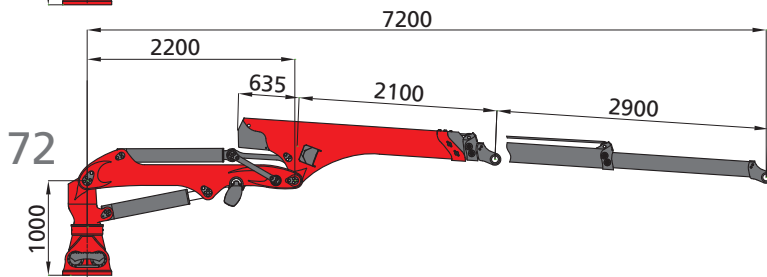
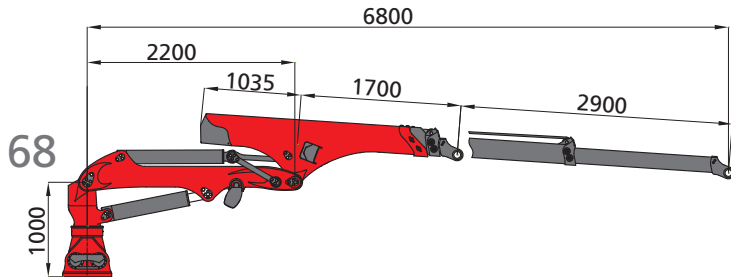
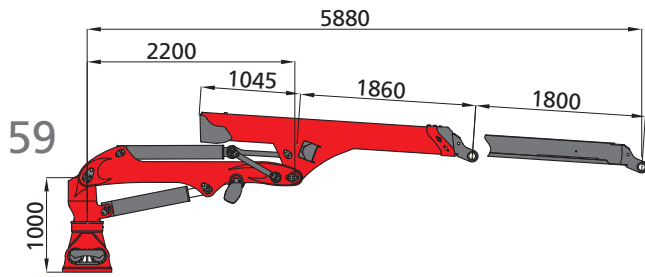


crane type	M-class									S-class						X-class																	
	M70F			M80F			S100F			S110F			X120F			X140F																	
boom system	80	81	86	101	80	81	86	101	80	86	101	80	86	101	80	86	102	80	86	102													
lifting moment [kNm]	102									128						143						159						173					
lifting moment net [kNm]	68	71	68	65	79	82	79	75	91	90	86	104	100	111	110	107	123	122	119														
max. outreach [m]	8,0	8,0	8,6	10,1	8,0	8,0	8,6	10,1	8,0	8,6	10,1	8,0	8,6	10,1	8,0	8,6	10,2	8,0	8,6	10,2													
slewing torque net [kNm]	26									33						36						40						43					
slewing torque [kNm]	31									40						44						45						49					
slewing angle [°]	385									385						380																	
dead weight without link / rotator [kg]	1590	1590	1650	1730	1620	1620	1680	1760	1750	1800	1890	1780	1830	1920	2090	2140	2220	2120	2170	2250													
operating pressure [bar]	215									215						240						230						250					
recommended pump capacity [l/min]	80-100									80-100						100-120																	
rotator (Indexator)	G121									G141						G141																	

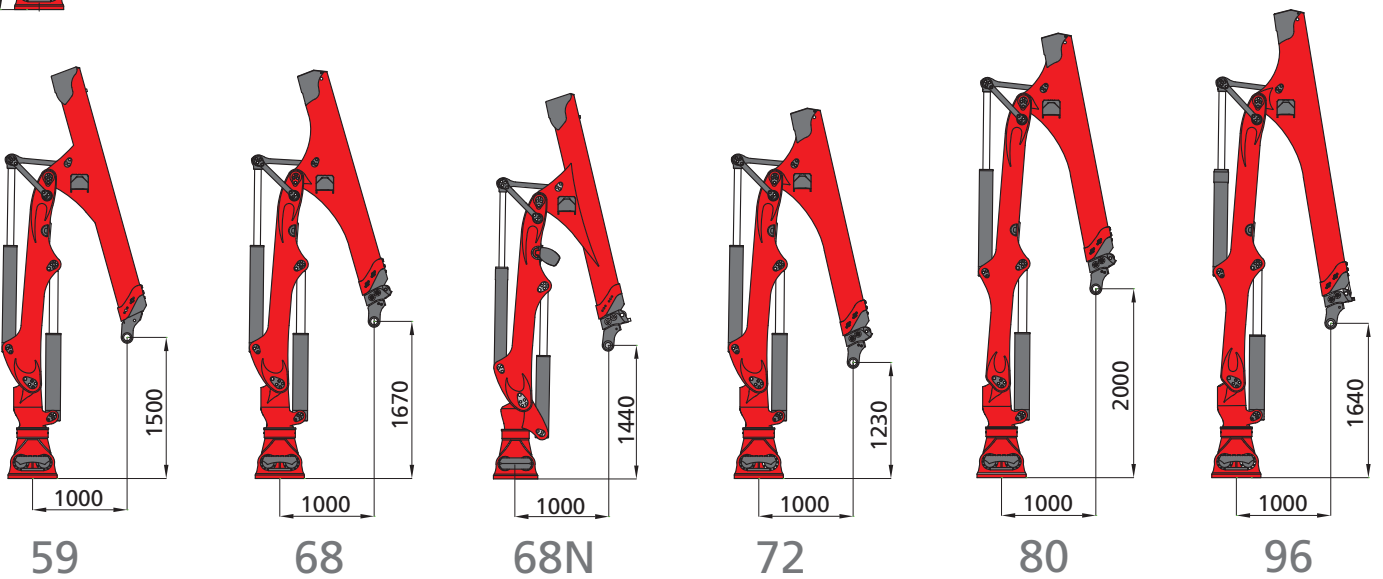
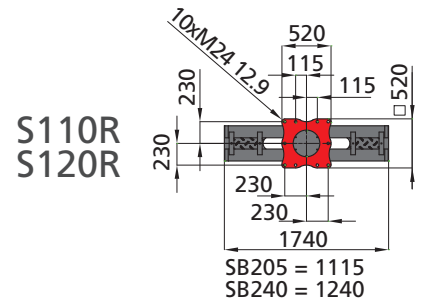
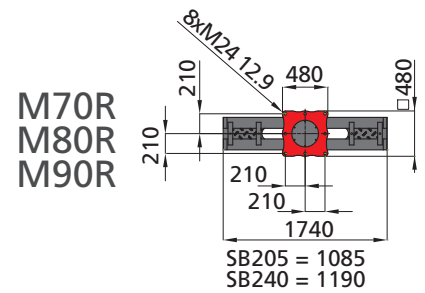
Weight of standard crane, incl. oil, spot lights and cylinder protection, without link and rotator, material tolerance +/- 5%; lifted weight, net without accessories

SKIDDER CRANES

M-CLASS / S-CLASS

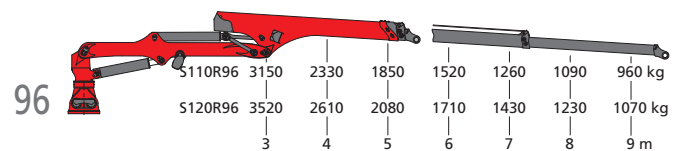
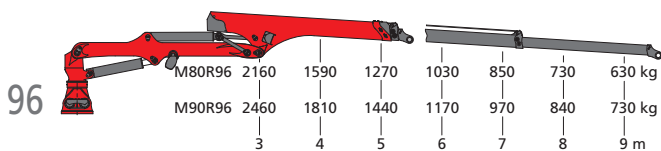
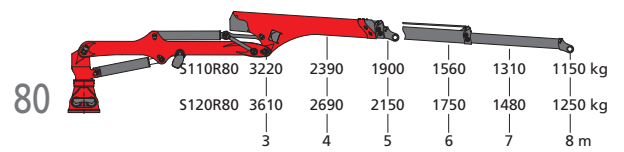
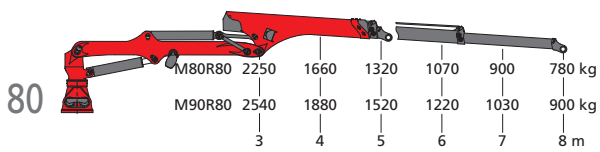
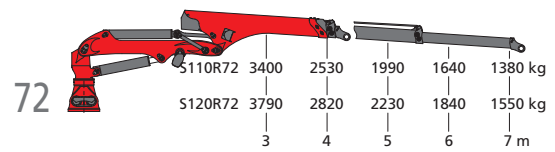
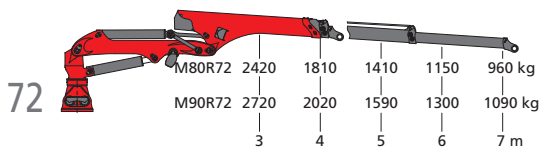
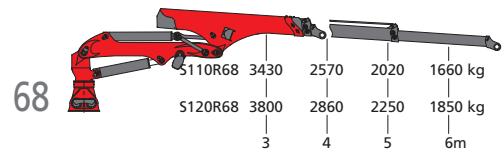
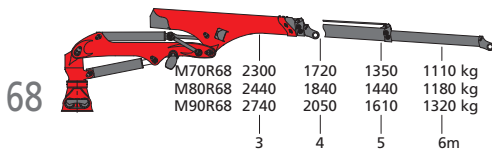
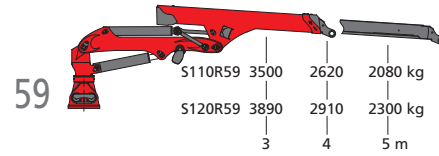
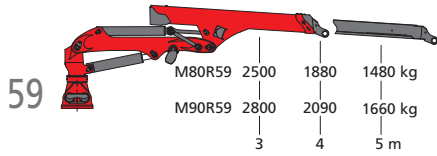


short column
(only for M70R68)



M-CLASS

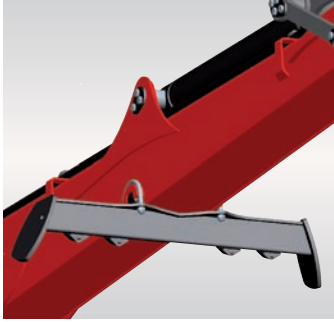
S-CLASS



crane type	M-class										S-class											
	M70R		M80R				M90R				S110R					S120R						
boom system	68	59	68	72	80	96	59	68	72	80	96	59	68	72	80	96	59	68	72	80	96	
lifting moment [kNm]	90	95				104				126					139							
lifting moment net [kNm]	69	75	73	68	65	84	82	76	74	105	103	102	97	95	117	114	108	106				
max. outreach [m]	6,8	5,9	6,8	7,2	8,0	9,6	5,9	6,8	7,2	8,0	9,6	5,9	6,8	7,2	8,0	9,6	5,9	6,8	7,2	8,0	9,6	
slewing torque net [kNm]	25	26				29				33					36							
slewing angle [°]	385										385											
dead weight without link / rotator [kg]	1430	1330	1450	1490	1620	1360	1480	1520	1650	1490	1580	1630	1730	1520	1610	1660	1760					
operating pressure [bar]	190	200				220				205					225							
recommended pump capacity [l/min]	60-80										80-100											
rotator (Indexator)	G121	G141										G141										

Weight of standard crane, incl. oil, spot lights and cylinder protection, without link and rotator; material tolerance +/- 5%; lifted weight, net without accessories

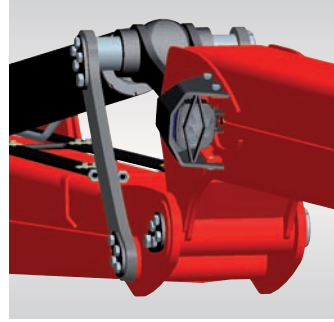
Equipment



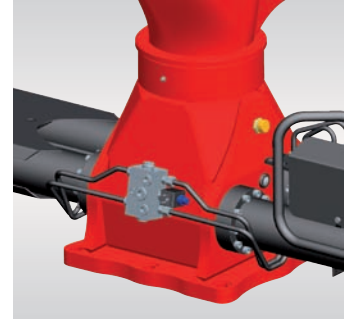
KM fixed heel (not available for C-class)



XE Xenon spot lights for Epslight

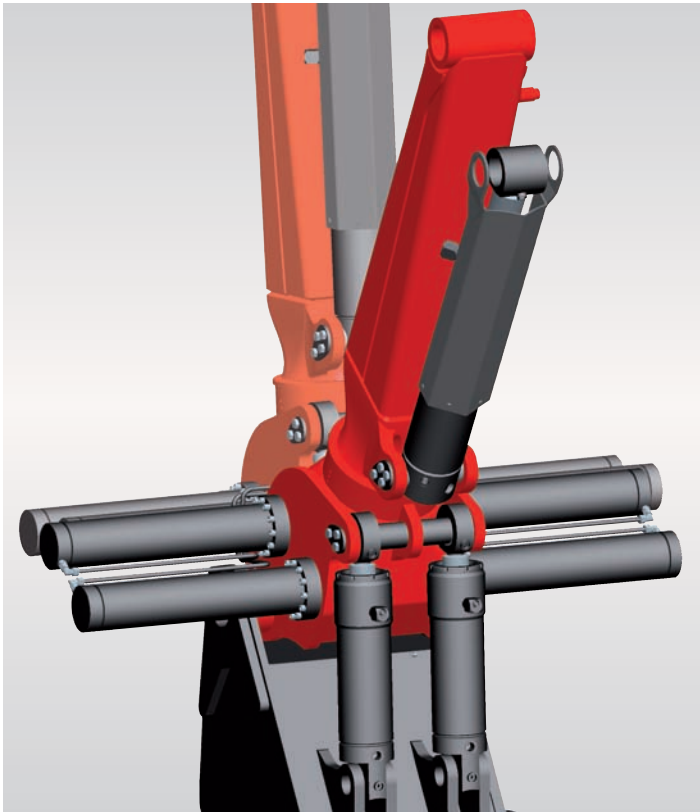


LED spot lights



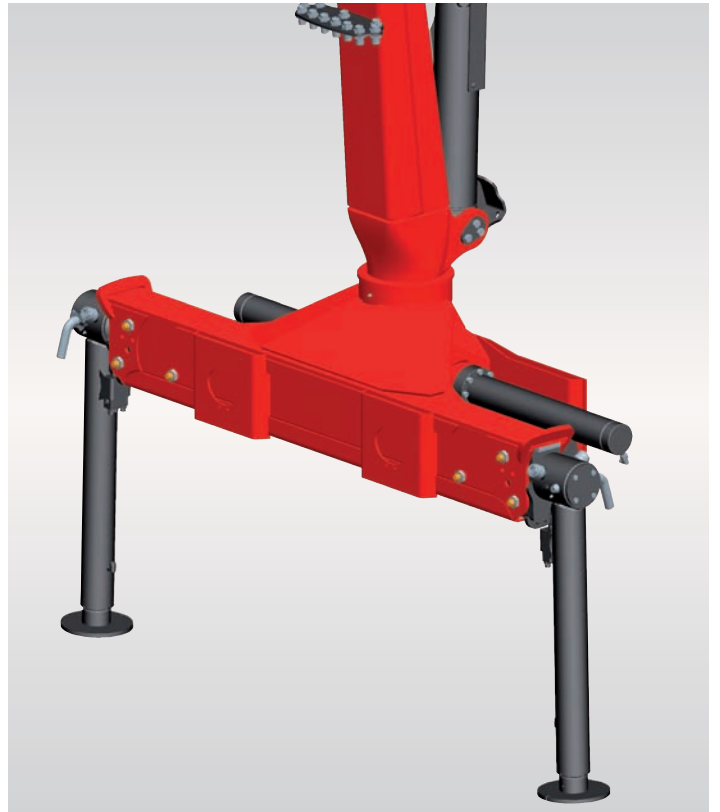
STV valve for floating position (not available for C-class)

Tilt able crane base



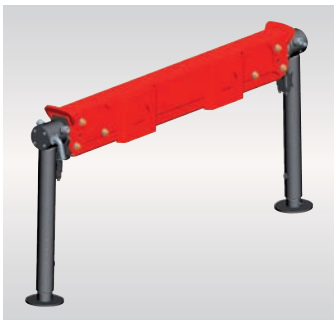
GT tilt able crane base (not available for C-class)

GIRX39 / GIRX41



GIRX39 integrated stabilizer beam 3,9m (for M-class and S-class) M30, property class 12.9, 42 Cr Mo 4v, locking torque 900 Nm
 GIRX41 integrated stabilizer beam 4,1m (for C-class) M24, property class 12.9, 42 Cr Mo 4v, locking torque 450 Nm

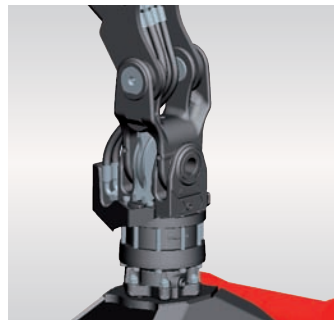
SRX39



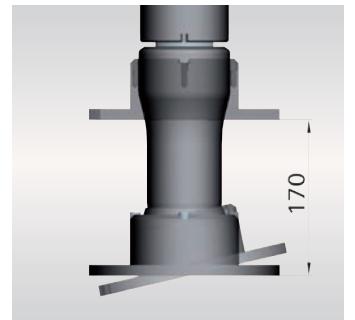
SRX39 stabilizer beam 3,9m loose M30, property class 12.9, 42 Cr Mo 4v, locking torque 900 Nm



SFD38 flap down stabilizer loose M24, property class 12.9, 42 Cr Mo 4v, locking torque 450 Nm

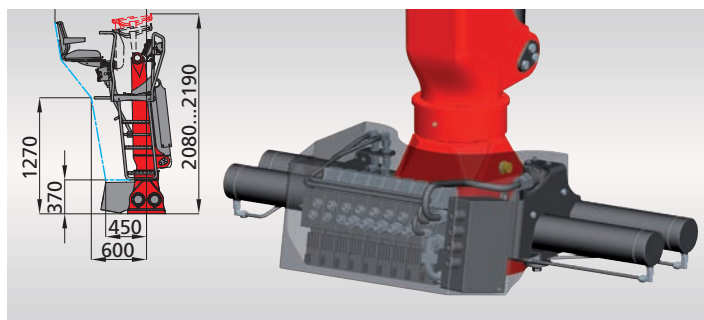


BK118 MPB 100 swing damper, G121 rotator, 4-eye knuckle set



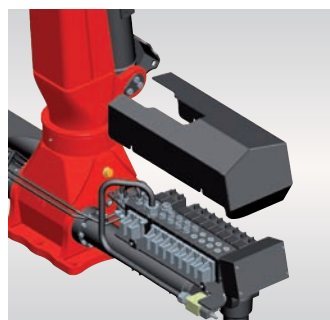
TVP 170mm extended stabilizer with pendulum plate

DM8H

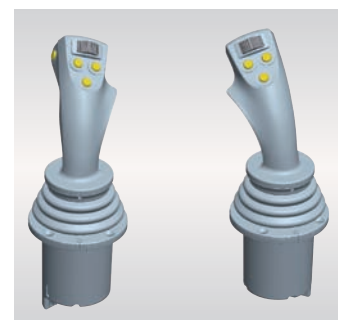


- DM8H** control valve Danfoss mounted behind crane base (for C-class)
- HS** top seat mounted without control

Control version

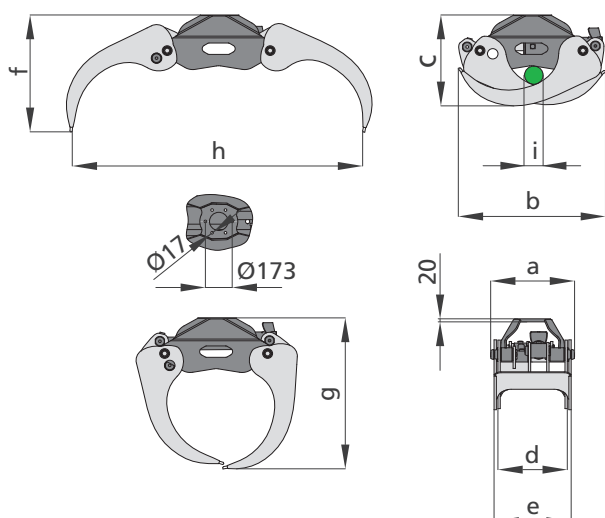


- DM9F / DM10F** control valve Danfoss mounted on slewing cylinders (for M-class and S-class)



- PROF1** 2pcs Danfoss joysticks incl. 10m cable. Compatible with DM8H / DM9F / DM10F

GRABS FOR FORWARDER AND SKIDDER CRANES



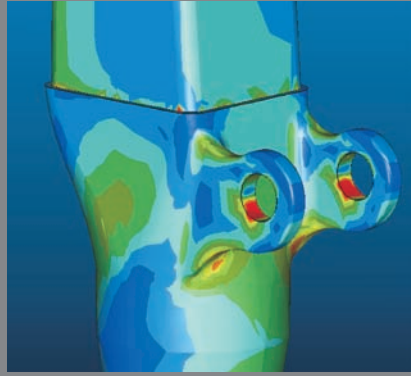
type		FG27	FG37	FG43	FG43S	FG53	FG57X	FG31R
gripping area	[m ²]	0,26	0,36	0,4	0,4	0,5	0,5	0,36
load capacity	[kg]	4000	4000	5000	6000	5000	9000	4000
max. operat. pressure	[MPa]	25	25	23	24	23	27	25
gripping force	[kN]	14,1	13,1	18,9	19,7	18	23,3	14,1
dead weight	[kg]	170	180	225	260	235	320	200
a	[mm]	470	470	540	540	540	540	470
b	[mm]	820	930	950	950	1050	1160	895
c	[mm]	540	570	600	600	640	690	575
d	[mm]	390	390	450	460	450	460	390
e	[mm]	440	440	500	520	500	520	470
f	[mm]	760	800	770	770	780	980	765
g	[mm]	860	920	1000	1000	1040	1150	910
h	[mm]	1480	1570	1880	1880	1980	2030	1580
i	[mm]	100	100	120	120	165	130	105



QUALITY FOR THE FUTURE



3-D construction of all components with the latest CAD-system



FEM-calculation for robust construction with optimal weight



Endurance test on modern test benches by full capacity utilization



KTL-coating with burn-in process at 160°C



Powder coating with burn-in process at 200°C



Quality in every **RAL colour**



In the **workshop in Elsbethen** near Salzburg EPSILON ON Road, OFF Road and Recycling cranes as well as STEPA farm, mobile and Tractor cranes are produced.



Just in time production in a state-of-the-art workshop

EPSILON Kran GmbH

Christophorusstraße 30
A-5061 Elsbethen-Glasenbach
Tel.: +43 (0)662 629548-0
Fax: +43 (0)662 629548-3
E-Mail: office@epsilonkran.com

EPSILON PALFINGER

www.epsilonkran.com



EN ISO 9001
Zertifikat-Nr. 20 100 52001034
www.tuv.at

PRO30_GB
10/12