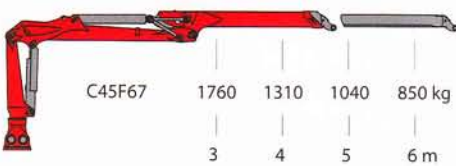
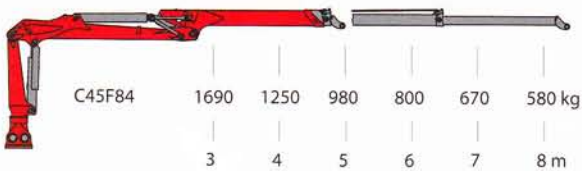
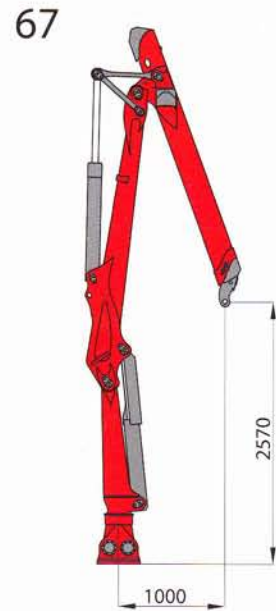
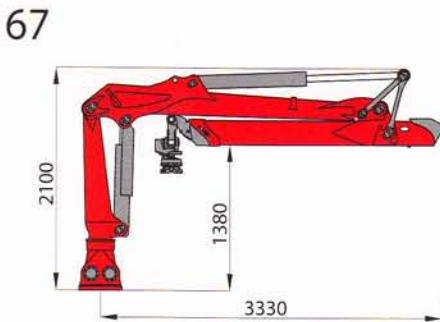
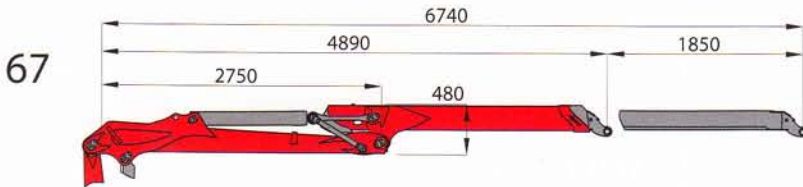
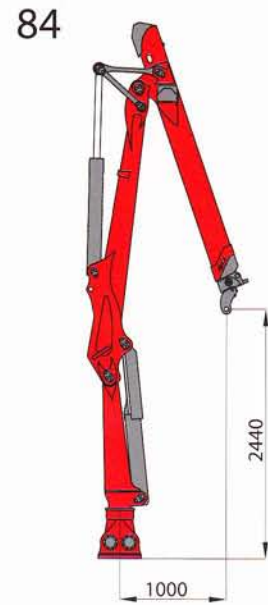
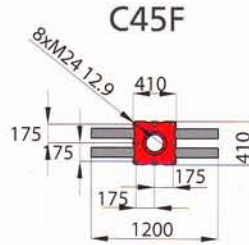
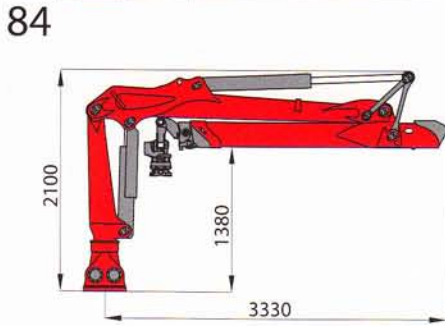
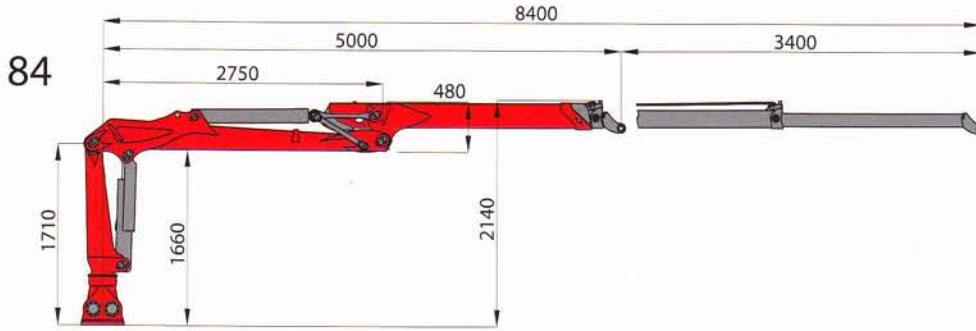


FORWARDER CRANES

C-CLASS

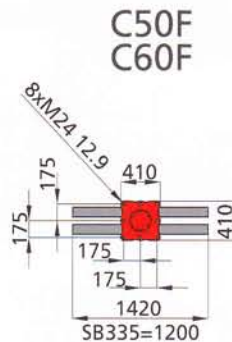
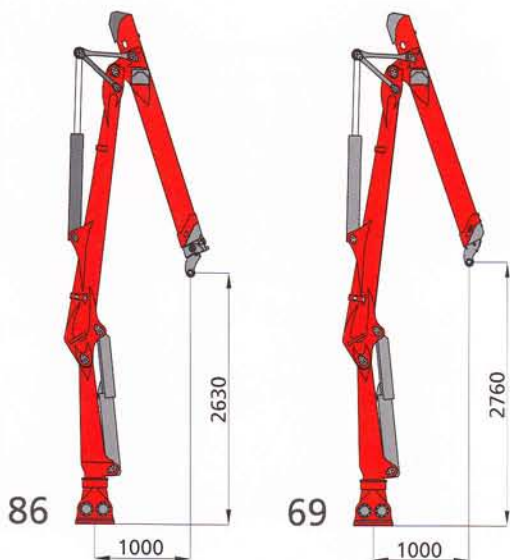
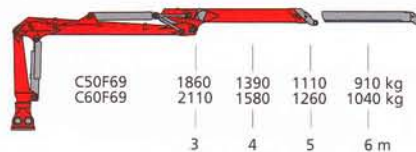
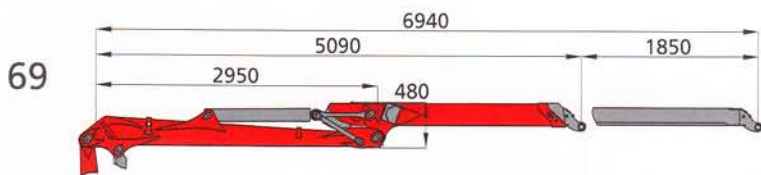
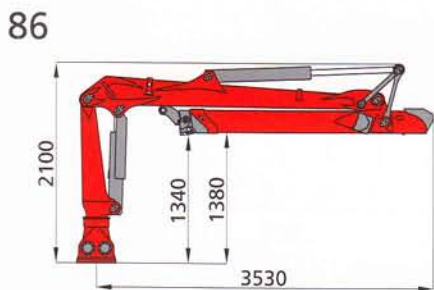
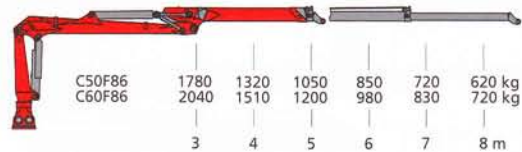
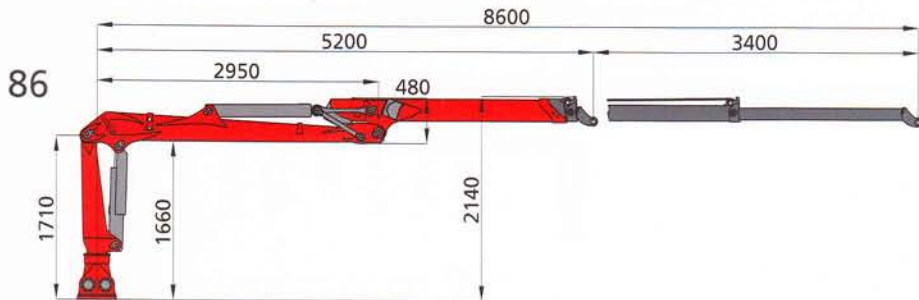


| crane type boom system | C45F | |
|---|--------|------|
| | 67 | 84 |
| lifting moment [kNm] | 71 | |
| lifting moment net [kNm] | 53 | 51 |
| max. outreach [m] | 6,7 | 8,4 |
| slewing torque net [kNm] | 14 | |
| slewing angle [°] | 340 | |
| dead weight without link / rotator [kg] | 1020 | 1100 |
| operating pressure [bar] | 170 | |
| recommended pump capacity [l/min] | 100 LS | |
| rotator (EPSILON) | RB06F | |

Weight of standard crane, incl. oil, spot lights and cylinder protection, without link and rotator; material tolerance +/- 5%; lifted weight, net without accessories

Designed for intermediate operation, max. 4 hours / day or 800 hours / year

FORWARDER CRANES C-CLASS



| crane type boom system | C-class | | | |
|---|---------|--------|------|--------|
| | C50F | | C60F | |
| | 69 | 86 | 69 | 86 |
| lifting moment [kNm] | | 76 | | 82 |
| lifting moment net [kNm] | 56 | 54 | 63 | 61 |
| max. outreach [m] | 6,9 | 8,6 | 6,9 | 8,6 |
| slewing torque net [kNm] | | 18 | | 20 |
| slewing angle [°] | | 425 | | 425 |
| dead weight without link / rotator [kg] | 1060 | 1140 | 1090 | 1170 |
| operating pressure [bar] | | 180 | | 200 |
| recommended pump capacity [l/min] | | 120 LS | | 120 LS |
| rotator (EPSILON) | | RB06F | | RB06F |

Weight of standard crane, incl. oil, spot lights and cylinder protection, without link and rotator; material tolerance +/- 5%; lifted weight, net without accessories