



# JAPAN AUTOMOBILE FEDERATION

F. I. A. Recognition No. 5149  
Group 1 - Tourisme de Série

## FEDERATION INTERNATIONALE DE L'AUTOMOBILE

Form of recognition in accordance with  
Appendix J to the International Sporting Code.

Manufacturer	Isuzu Motors Limited	Cylinder-capacity	1471	cm <sup>3</sup>	89.77	in.
Serial No. of chassis	PR20 - 4068746	Model	Isuzu PR 20 (Bellett 1500)			
Serial No. of engine	G150 - 355291	Manufacturer	Isuzu Motors Limited			
Recognition is valid from	<u>1st April 1967</u>	Manufacturer	Isuzu Motors Limited			
		List	<u>16/1</u>			

The manufacturing of the model described in this recognition form was started on July, 1966 and the minimum production of 5,000 identical cars, in accordance with the specifications of this form was reached on NOV., 1966

Photograph A, 3/4 view of car from front



The vehicle described in this form has been subject to the following amendments :

Variants

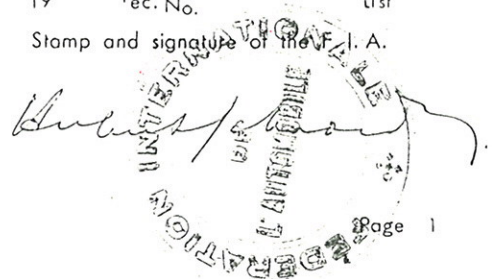
Normal evolution of the type

on	19	rec. No.	List	on	19	rec. No.	List
on	19	rec. No.	List	on	19	rec. No.	List
on	19	rec. No.	List	on	19	rec. No.	List
on	19	rec. No.	List	on	19	rec. No.	List
on	19	rec. No.	List	on	19	rec. No.	List

Stamp and signature of the  
National Sporting Authority



Stamp and signature of the F. I. A.



Make Isuzu Motors Limited

Model Isuzu PR 20

F. I. A. Rec. No.

IMPORTANT - the underlined items must be stated in two measuring systems, one of which must be the metric system. See conversion table hereafter.

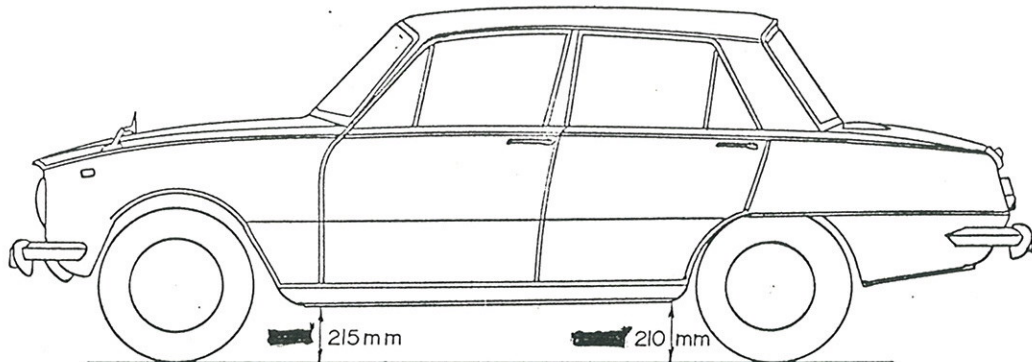
**CAPACITIES AND DIMENSIONS**

1. <u>Wheelbase</u>	2350	mm	92.52	inches
2. <u>Front track</u>	1225	mm	48.23	inches *
3. <u>Rear track</u>	1200	mm	47.24	inches *
4. Overall length of the car		403.0	cm	inches
5. Overall width of the car		149.5	cm	inches
6. Overall height of the car		139.0	cm	inches
7. <u>Capacity of fuel tank</u> (reserve included)				40 ltrs
	10.5	Gallon US		Gallon Imp.
8. Seating capacity	5 Seaters			
9. <u>Weight</u> , total weight of the car with normal equipment, water, oil and spare wheel but without fuel nor repair tools:				
	905	kg	2,000	lbs cwt

\* Differences in track caused by the use of other wheels with different rim widths must be stated when recognition is requested for the wheels concerned.

Specify ground clearance in relation to the track and give drawing of two fixed points of the vehicle's structure at which measurements are taken.

These ground clearance dimensions are only for information when checking the track and can in no way affect the eligibility of the car.



**CONVERSION TABLE**

1 inch / pouce	-- 2.54 cm	1 quart US	-- 0.9464 ltrs
1 foot / pied	-- 30.4794 cm	1 pint (pt)	-- 0.568 ltrs
1 square inch / pouce carré	-- 6.452 cm <sup>2</sup>	1 gallon Imp.	-- 4.546 ltrs
1 cubic inch / pouce cube	-- 16.387 cm <sup>3</sup>	1 gallon US	-- 3.785 ltrs
1 pound / livre (lb)	-- 453.593 gr.	1 hundred weight (cwt)	-- 50.802 kg



Make Isuzu Motors Limited

Model Isuzu PR 20

F. I. A. Rec. No.

**CHASSIS AND COACHWORK** (Photographs A, B and C)

- 20. Chassis/body construction : ~~separate~~ / unitary construction
- 21. Unitary construction, material (s) Steel, ~~Cast Iron, Aluminum~~  
Separate construction
- 22. Separate Constructions: Material (s) of chassis
- 23. Material (s) of coachwork
- 24. Number of doors ~~4~~ Material (s) Steel ~~4-Door~~
- 25. Material (s) of bonnet Steel
- 26. Material (s) of boot lid Steel
- 27. Material (s) of rear-window Glass
- 28. Material (s) of windscreen Glass
- 29. Material (s) of front-door windows Glass
- 30. Material (s) of rear-door windows Glass
- 31. Sliding system of door windows Vertical, Manual
- 32. Material (s) of rear-quarter light

**ACCESSORIES AND UPHOLSTERY**

- 38. Interior heating : ~~yes~~ - no
- 39. Air-conditioning : ~~yes~~ - no
- 40. Ventilation : ~~yes~~ - no
- 41. Front seats, type of seats and upholstery Bucket or Bench, Textiles ~~and~~ vinyl
- 42. Weight of front seat (s), complete with supports and rails, out of the car :  
Bucket Each 10.0 kg lbs  
Bench 18.5
- 43. Rear seats, type of seats and upholstery Bench, Textiles ~~and~~ vinyl
- 44. Front bumper, material (s) Steel Weight 6 kg lbs
- 45. Rear bumper, material (s) Steel Weight 6 kg lbs

**WHEELS**

- 50. Type Pressed Steel
- 51. Weight (per wheel, without tyre) 4.0" Rim 5.6 kg lbs  
4.5" Rim 6.0
- 52. Method of attachment 4 Wheel Pin and Nuts
- 53. Rim diameter 330.2 mm 13.0 inches
- 54. Rim width 102 or 114 mm 4.0 or 4.5 inches

**STEERING**

- 60. Type Rack and Pinion
- 61. Servo-assistance : ~~yes~~ - no
- 62. Number of turns of steering wheel from lock to lock 2.9
- 63. In case of servo-assistance





Make Isuzu Motors Limited

Model Isuzu PR 20

F.I.A. Rec. No.

**SUSPENSION**

70. Front suspension (photogr. D), type Independent, Coil Spring, Wishbone type  
71. Type of spring Coil  
72. Stabiliser (if fitted) Torsion Bar  
73. Number of shockabsorbers 2  
74. Type Hydraulic Telescopic  
78. Rear suspension (photogr. E), type Independent, Diagonal Link  
79. Type of spring Coil and Transverse leaf  
80. Stabiliser (if fitted)  
81. Number of shockabsorbers 2  
82. Type Hydraulic Telescopic

**BRAKES** (photographs F and G)

90. System Hydraulic  
91. Servo-assistance (if fitted), type  
92. Number of hydraulic master cylinders 1

	FRONT		REAR	
93. Number of cylinders per wheel	1		1	
94. Bore of wheel cylinder (s)	22.2	mm	22.2	mm
		in.		in.
<b>Drum brakes</b>				
95. Inside diameter	203.2	mm	203.2	mm
		in.		in.
96. Length of brake linings	195.0	mm	195.0	mm
		in.		in.
97. Width of brake linings	37.1	mm	37.1	mm
		in.		in.
98. Number of shoes per brake	2		2	
99. Total area per brake	14,430	mm <sup>2</sup>	14,430	mm <sup>2</sup>
		sq. in.		sq. in.
<b>Disc brakes</b>				
100. Outside diameter		mm		mm
		in.		in.
101. Thickness of disc		mm		mm
		in.		in.
102. Length of brake linings		mm		mm
		in.		in.
103. Width of brake linings		mm		mm
		in.		in.
104. Number of pads per brake.				
105. Total area per brake		mm <sup>2</sup>		mm <sup>2</sup>
		sq. in.		sq. in.



Make Isuzu Motors Limited

Model Isuzu PR 20

F. I. A. Rec. No.

ENGINE (photographs J and K)

- 130. Cycle 4
- 131. Number of cylinders 4
- 132. Cylinder arrangement In-line
- 133. Bore 79 mm 3.110 in. 134. Stroke 75 mm 2.953 in.
- 135. Capacity per cylinder 367.6 cm<sup>3</sup> 22.43 cu. in.
- 136. Total cylinder-capacity 1471 cm<sup>3</sup> 89.74 cu. in.
- 137. Material (s) of cylinder block Cast Iron
- 138. Material (s) of sleeves (if fitted)
- 139. Cylinder-head, material (s) Cast Iron Number fitted 1
- 140. Number of inlet ports 4
- 141. Number of exhaust ports 4
- 142. Compression ratio 8.5 ; 1
- 143. Volume of one combustion chamber 49.0 cm<sup>3</sup> cu. in.
- 144. Piston, material Aluminum 145. Number of rings 3
- 146. Distance from gudgeon pin centre line to highest point of piston crown 37.4 mm inches
- 147. Crankshaft : ~~rc/4/8/4~~ / stamped 148. Type of crankshaft : integral /
- 149. Number of crankshaft main bearings 5 set
- 150. Material of bearing cap Cast Iron
- 151. System of lubrication : ~~At/4/4/4~~ / oil in sump
- 152. Capacity, lubricant 3.2 ltrs pts quarts US
- 153. Oil cooler : ~~✓~~ / no
- 154. Method of engine cooling Water quarts US
- 155. Capacity of cooling system 5.7 ltrs pints
- 156. Cooling fan (if fitted), dia. 32 cm inches
- 157. Number of blades of cooling fan 4

Bearings

- 158. Crankshaft main, type Plain Dia. 56 mm in.
- 159. Connecting rod big end, Plain Dia. 49 mm in.

Weights

- 160. Flywheel (clean) 10.4 kg lbs
- 161. Flywheel with clutch (all turning parts) 16.5 kg lbs
- 162. Crankshaft 15.3 kg lbs
- 163. Connecting rod 0.56 kg lbs
- 164. Piston with rings and pin 0.46 kg lbs





Make Isuzu Motors Limited

Model Isuzu PR 20

F.I.A. Rec. No.

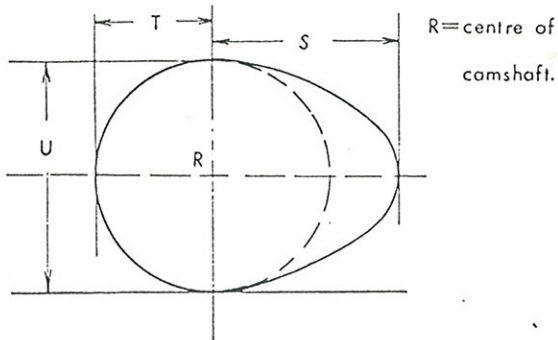
ENGINE ACCESSORIES

- |   |                          |       |
|---|--------------------------|-------|
| 230. Fuel pump : mechanical <i>o/d // b/ e/e/t/f</i>  | 231. No. fitted          | 1     |
| 232. Type of ignition system Make and break ignition  | 233. No. of distributors | 1     |
| 234. No. of ignition coils                            | 1                        |       |
| 236. Generator, type: dynamo/alternator-number fitted | 1                        |       |
| 238. Voltage of generator                             | 12                       | volts |
| 240. Location   | Engine Room              |       |
| 241. Voltage of battery                               | 12                       | volts |

ENGINE AND CAR PERFORMANCES (as declared by manufacturer in catalogue)

- |                               |           |                            |       |       |              |
|-------------------------------|-----------|----------------------------|-------|-------|--------------|
| 250. Max. engine output       | 68 PS     | (type of horsepower: JIS ) | at    | 5,000 | rpm          |
| 251. Maximum rpm              | 5,000     | output at that figure      |       | 68 PS |              |
| 252. Maximum torque           | 11.3 Kg-m | at                         | 2,200 | rpm   |              |
| 253. Maximum speed of the car | 140       | km/hour                    |       |       | miles / hour |

255.



<u>Inlet cam</u>					
S =	22.2	mm	0.876	inches	
T =	15.8	mm	0.622	inches	
U =	31.6	mm	1.245	inches	
<u>Exhaust cam</u>					
S =	22.3	mm	0.878	inches	
T =	15.8	mm	0.622	inches	
U =	31.7	mm	1.248	inches	



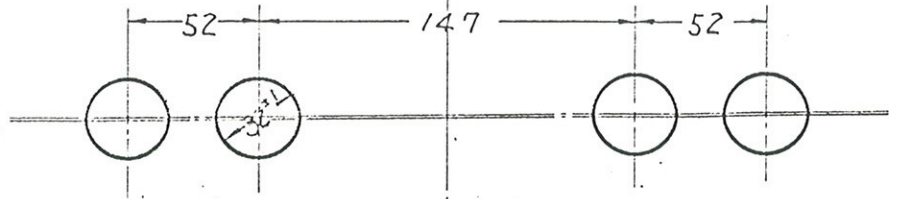


Make Isuzu Motors Limited

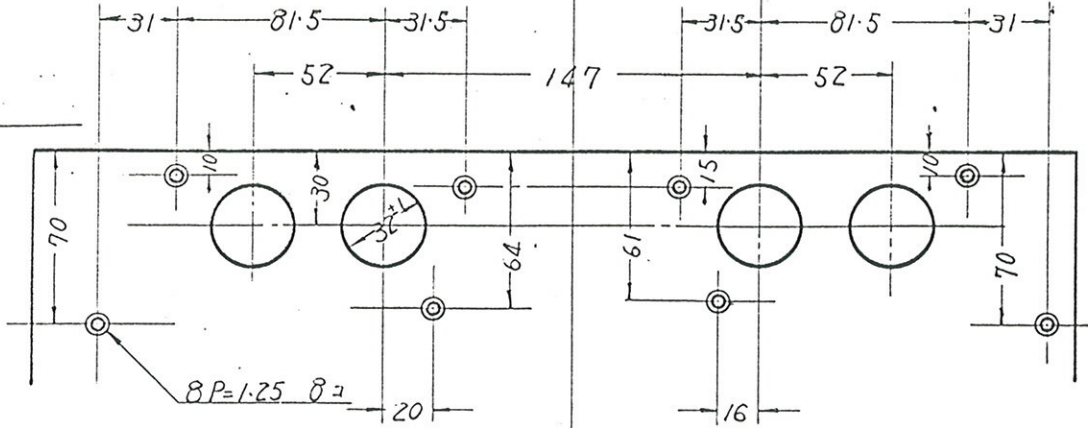
Model Isuzu PR 20

F.I.A. Rec. No.

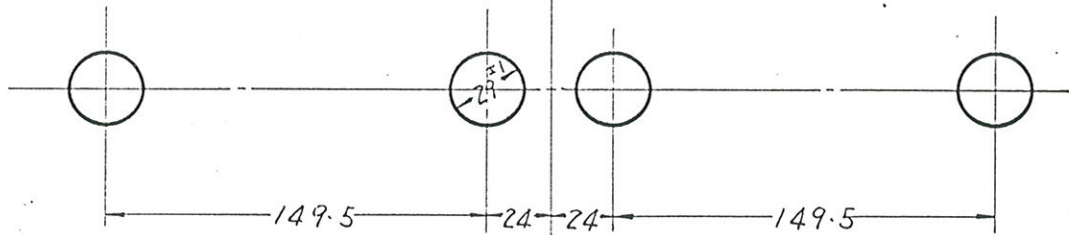
Drawing inlet manifold ports, side of cylinder-head. Indicate scale or dimensions and manufacturing tolerance.



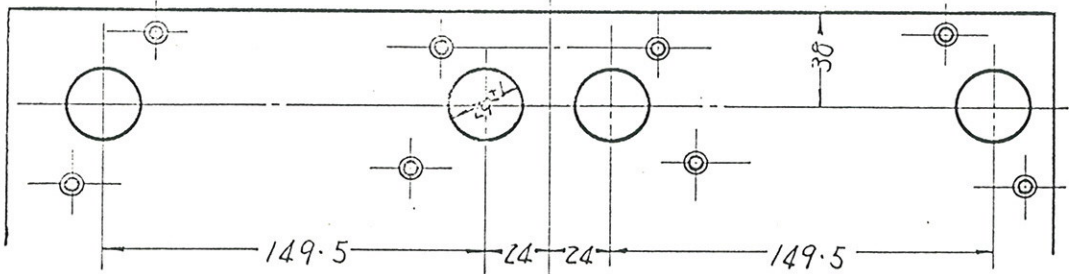
Drawing of entrance to inlet port of cylinder-head. Indicate scale or dimensions and manufacturing tolerance.



Drawing exhaust manifold ports, side of cylinder-head. Indicate scale or dimensions and manufacturing tolerance.



Drawing of exit to exhaust port of cylinderhead. Indicate scale or dimensions and manufacturing tolerance.



unit ; mm





Make Isuzu Motors Limited

Model Isuzu PR 20

F. I. A. Rec. No.

DRIVE TRAIN

CLUTCH

260. Type of clutch Dry Plate 261. No. of plates 1

262. Dia. of clutch plates 20.3 cm inches

263. Dia. of linings, inside 14.6 cm in. outside 20.3 cm in.

264. Method of operating clutch Mechanical

GEAR BOX (photograph H)

270. Manual type, make Isuzu Method of operation Mechanical

271. No. of gear-box ratios forward 4 272. Synchronized forward ratios 4 (1, 2, 3, 4)

273. Location of gear-shift Floor or Column

274. Automatic, make type

275. No. of forward ratios 276. Location of gear-shift

277.	Manual		Automatic		Alternative manual/automatic		Ratio	
	Ratio	No. teeth	Ratio	No. teeth	Ratio	No. teeth	Ratio	No. teeth
1	3.507	$\frac{29}{18} \times \frac{37}{17}$			3.207	$\frac{28}{19} \times \frac{37}{17}$		
2	2.175	$\frac{29}{18} \times \frac{27}{20}$			1.989	$\frac{28}{19} \times \frac{27}{20}$		
3	1.418	$\frac{29}{18} \times \frac{22}{25}$			1.356	$\frac{28}{19} \times \frac{23}{25}$		
4	1.000				1.000			
5								
6								
reverse	3.927	$\frac{29}{18} \times \frac{39}{16}$			3.592	$\frac{28}{19} \times \frac{39}{16}$		

278. Overdrive, type

279. Forward gears on which overdrive can be selected

280. Overdrive ratio

FINAL DRIVE

290. Type of final drive Hypoid Bevel

291. Type of differential Bevel

292. Type of limited slip differential (if fitted)

293. Final drive ratio 3.727 or 4.100  
Number of teeth 41/11 or 41/10



Make Isuzu Motors Limited

Model Isuzu PR 20

F. I. A. Rec. No.

IMPORTANT- The conformity of the car with the following items of the present recognition form is to be disregarded during the scrutineering, when the vehicle has been entered in group 2 (Touring cars) or 3 (Grand Touring cars) : 41, 72, 80, 91, 142, 143, 144, 145, 146, 153, 156, 157, 160, 161, 162, 163, 164, 182, 184, 186, 187, 188, 189, 199, 201, 202, 203, 212, 213, 215, 216, 222, 225, 230, 250, 251, 252, 253, and photographs I, M and N.

During the scrutineering of cars entered in group 4 (Sportscars) only the following items of the present recognition form are to be taken into consideration : 1, 2, 3, 9, 20, 21, 22, 23, 24, 25, 26, 70, 71, 78, 79, 90, 130, 131, 132, 133, 134, 135, 136, 137, 138, 139, 140, 141, 147, 148, 149, 150, 158, 159, 170, 171, 172, 173, 185, 200, 270, 271, 274, 275, 290, 291, 292 and photographs A, B, D, E, F, G, H, J, K, and O.

---

Optional equipment affecting preceding information. This to be stated together with reference number.





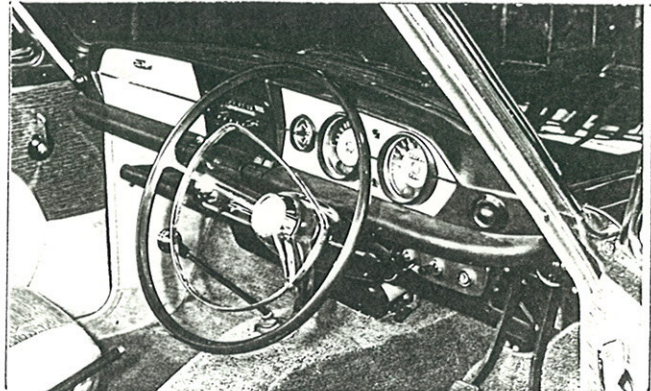
Make Isuzu Motors Limited

Model Isuzu PR 20

F.I.A. Rec. No.

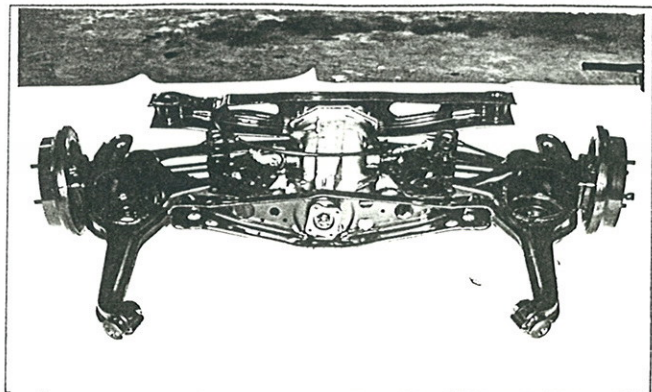
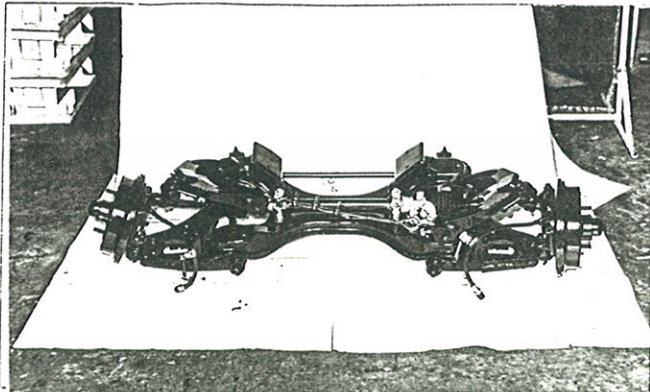
Photograph C, interior view of car through driver's door (open or removed) with dashboard

B, 3/4 view of car from rear



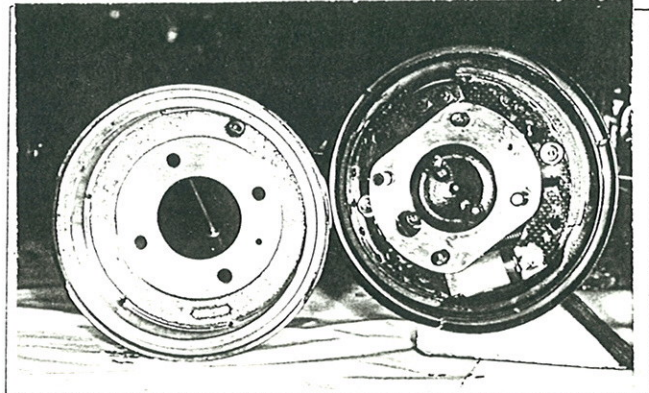
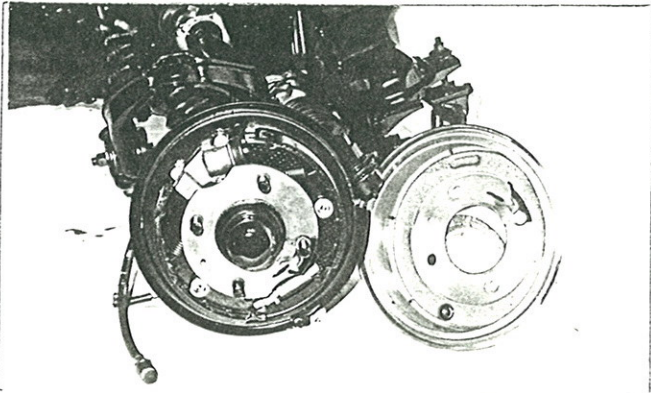
D, front axle complete, removed from car. Without wheels.

E, Rear axle complete without wheels, removed from car.



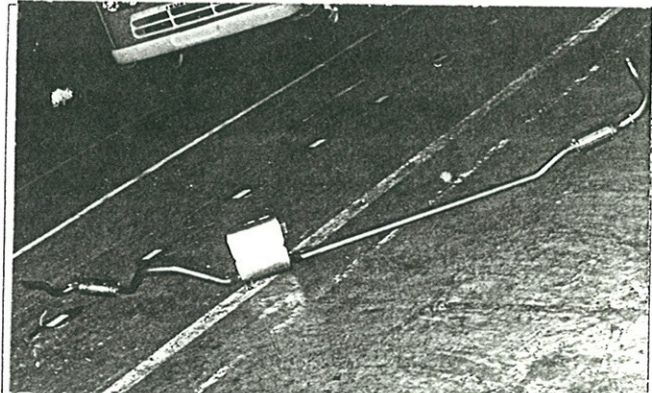
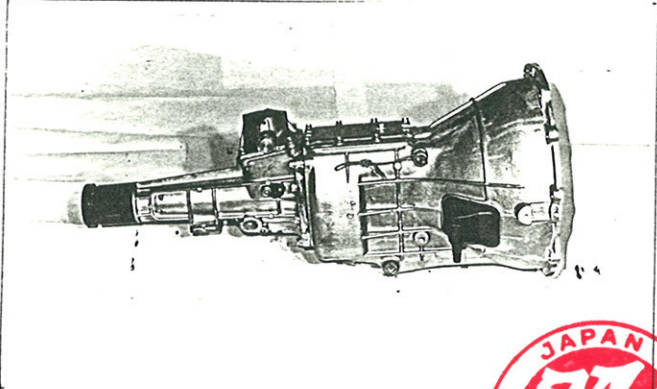
F, front brake. drum removed or disc with caliper(s)

G, rear brake. drum removed or disc with caliper(s)



H, gear-box, view from side

I, silencer + exhaust pipes after exhaust manifold.



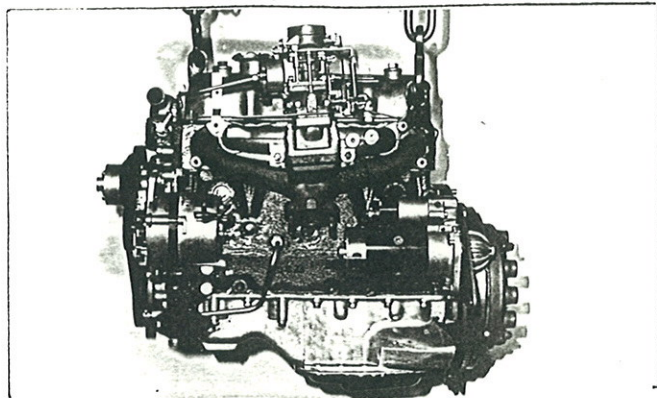
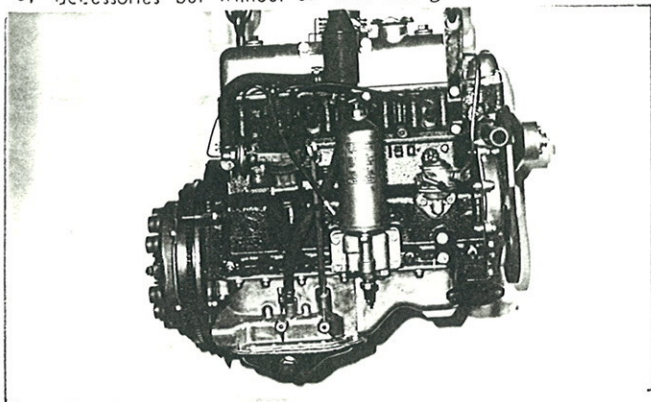


Make Isuzu Motors Limited

Model Isuzu PR 20 F.I.A. Rec. No

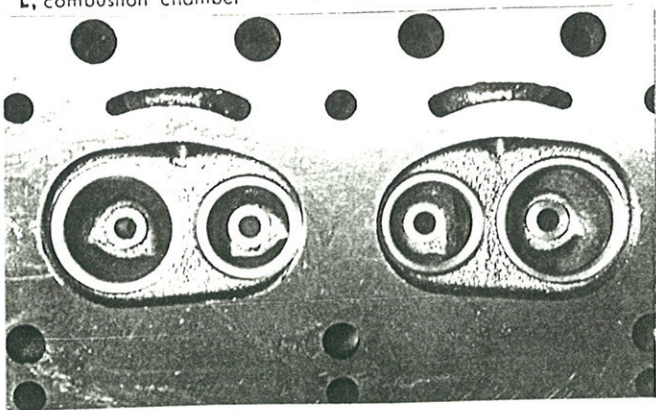
engine unit out of car, from right. With clutch and accessories but without air filter nor gear-box.

Photograph Engine unit out of car, from left. With clutch and accessories but without gear-box nor air filter.



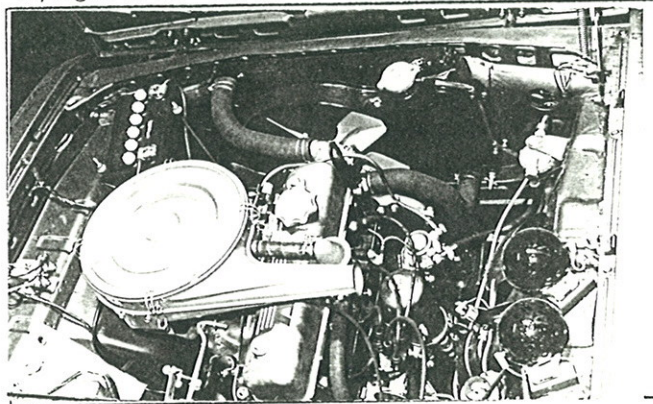
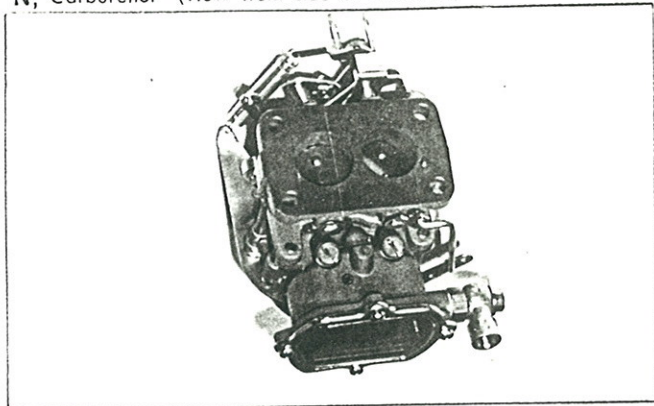
L, combustion chamber

M, piston crown



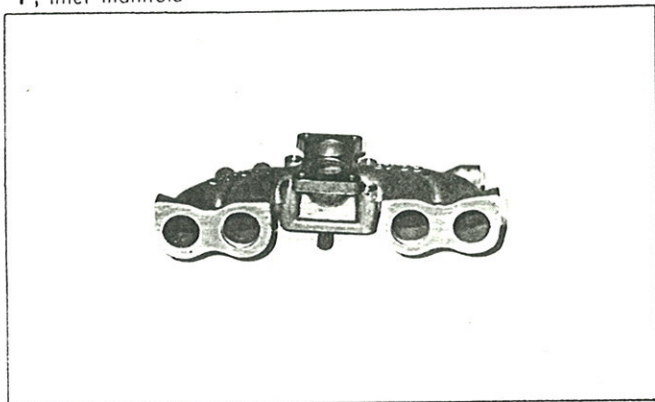
N, Carburettor (view from side of manifold)

O, engine in car with all accessories, bonnet open or removed.



P, inlet manifold

Q, exhaust manifold



36\*





Make Isuzu Motors Limited

Model Isuzu PR 20

F. I. A. Rec. No.

TWO STROKE ENGINES

300. System of cylinder scavenging				
301. Type of lubrication				
302. Inlet ports, length measured around cylinder wall			mm	inches
303. Height inlet port	mm	in.	304. Area	mm <sup>2</sup> sq. in.
305. Exhaust ports, length measured around cylinder wall			mm	inches
306. Height exhaust port	mm	in.	307. Area	mm <sup>2</sup> sq. in.
308. Transfer port, length measured around cylinder wall			mm	inches
309. Height transfer port	mm	in.	310. Area	mm <sup>2</sup> sq. in.
311. Piston ports, length measured around piston			mm	inches
312. Height piston port	mm	in.	313. Area	mm <sup>2</sup> sq. in.
314. Method of precompression			315. Precompression cyl.:	yes /no
316. Bore	mm inches		317. Stroke	mm inches
318. Distance from top of cyl. block to highest point of exhaust port :			mm	inches
319. Distance from top of cyl. block to lowest point of inlet port :			mm	inches
320. Distance from top of cyl. block to highest point of transfer port :			mm	inches
321. <u>Drawing of cylinder ports.</u>				

330. Supercharging—state full details hereafter :

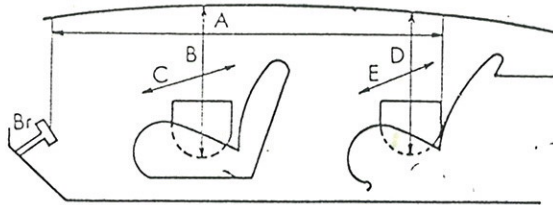
JAPAN AUTOMOBILE FEDERATION

難波靖右

Y a s u h a r u N a n b a

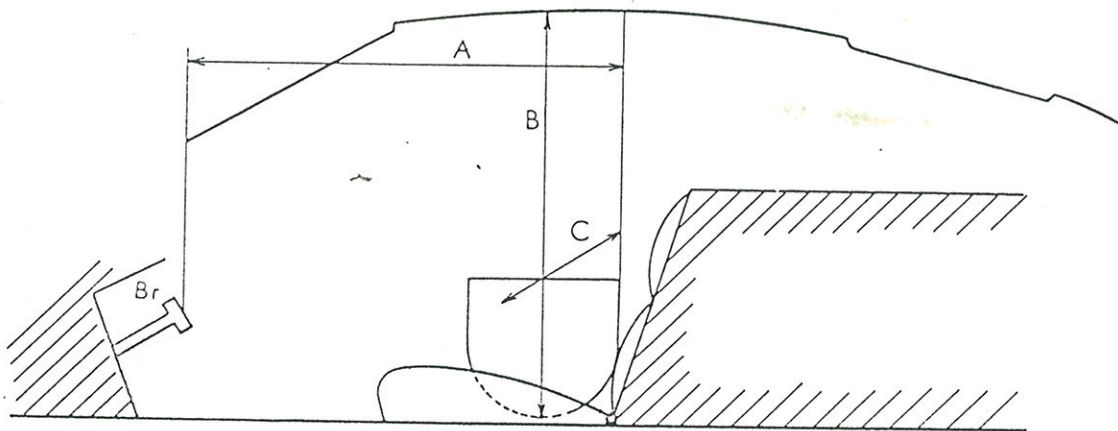


For four seaters :



Minimum		Dimensions		
A	B	C	D	E
167 cm	92 cm	122 cm	90 cm	122 cm

For two seaters :



Minimum		Dimensions
A	B	C

