



JAPAN AUTOMOBILE FEDERATION F.I.A. Homol. No

1474/1/1V

FEDERATION INTERNATIONALE DE L'AUTOMOBILE

Amendment to Form of Recognition in accordance with the International Sporting Code.

Make

Model Isuzu PR20S (Bellett 1500 Sports)'67

Modification's application starts with serial

chassis No. PR20-4068750
engine G 150D-356847

Application of this amendment started the

Oct. 1966

Commercial denomination after application of modifications

Mar. 1967

The modifications are to be considered as: Variant / normal evolution of the type

Date amendment is valid from

7/1/68 List 1968/1

Description of amendment Two door sedan.

The model produced on the same line as four door sedan.

3/4 view of car from front



3/4 view of car from rear



FIA Recognition No.1474

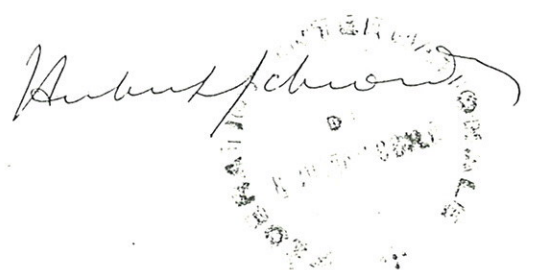
Stamp and signature of National Sporting Authority

Stamp and signature of F.I.A.

JAPAN AUTOMOBILE FEDERATION

[Handwritten signature]

Kazunari Komotori





JAPAN AUTOMOBILE FEDERATION

F. I. A. Recognition No.

1474

Group

2 - Tourisme

FEDERATION INTERNATIONALE DE L'AUTOMOBILE

Form of recognition in accordance with
Appendix J to the International Sporting Code.

Manufacturer Isuzu Motors Limited

Serial No. of chassis PR 20 - 4068750

engine G 150D - 356847

Recognition is valid from 1st April 1967

The manufacturing of the model described in this recognition form was started on Aug., 19'66 and the minimum production of 1,000 identical cars, in accordance with the specifications of this form was reached on Feb., 19'67

Cylinder-capacity 1471 cm³ 89.77 cu. in.

Model Isuzu PR 20S (Bellett 1500 Sport) '67

Manufacturer Isuzu Motors Limited

Manufacturer Isuzu Motors Limited

List 16/1

Photograph A, 3/4 view of car from front



The vehicle described in this form has been subject to the following amendments :

Variants

on	19	rec. No.	List
on	19	rec. No.	List
on	19	rec. No.	List
on	19	rec. No.	List
on	19	rec. No.	List

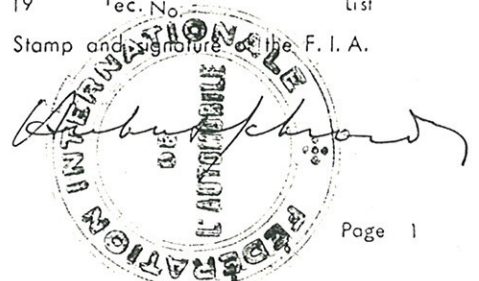
Normal evolution of the type

on	19	rec. No.	List
on	19	rec. No.	List
on	19	rec. No.	List
on	19	rec. No.	List
on	19	rec. No.	List

Stamp and signature of the
National Sporting Authority



Stamp and signature of the F. I. A.



Make Isuzu Motors Limited

Model. Isuzu PR 20S '67

F. I. A. Rec. No.

IMPORTANT - the underlined items must be stated in two measuring systems, one of which must be the metric system. See conversion table hereafter.

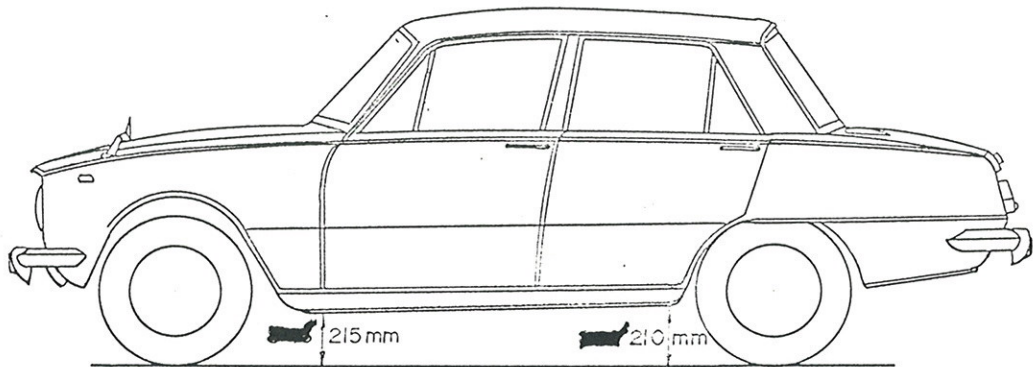
CAPACITIES AND DIMENSIONS

1. <u>Wheelbase</u>	2350	mm	92.52	inches
2. <u>Front track</u>	1245	mm	49.02	inches *
3. <u>Rear track</u>	1195	mm	47.05	inches *
4. Overall length of the car		403.0	cm	inches
5. Overall width of the car		149.5	cm	inches
6. Overall height of the car		139.0	cm	inches
7. <u>Capacity of fuel tank</u> (reserve included)				40 ltrs
	10.5	Gallon US		Gallon Imp.
8. Seating capacity	5	Seaters		
9. <u>Weight</u> , total weight of the car with normal equipment, water, oil and spare wheel but without fuel nor repair tools:				
	910	kg	2,010	lbs
				cwt

* Differences in track caused by the use of other wheels with different rim widths must be stated when recognition is requested for the wheels concerned.

Specify ground clearance in relation to the track and give drawing of two fixed points of the vehicle's structure at which measurements are taken.

These ground clearance dimensions are only for information when checking the track and can in no way affect the eligibility of the car.



CONVERSION TABLE

1 inch/pouce	-- 2.54 cm	1 quart US	-- 0.9464 ltrs
1 foot/pied	-- 30.4794 cm	1 pint (pt)	-- 0.568 ltrs
1 square inch/pouce carré	-- 6.452 cm ²	1 gallon Imp.	-- 4.546 ltrs
1 cubic inch/pouce cube	-- 16.387 cm ³	1 gallon US	-- 3.785 ltrs
1 pound/livre (lb)	-- 453.593 gr.	1 hundred weight (cwt)	-- 50.802 kg



Make Isuzu Motors Limited

Model Isuzu PR 20S '67

F.I.A. Rec. No.

CHASSIS AND COACHWORK (Photographs A, B and C)

20. Chassis/body construction : ~~separate~~ / unitary construction
21. Unitary construction, material (s) Steel, ~~Cast Iron, Aluminum~~
Separate construction
22. ~~Separate~~ Constructions: Material (s) of chassis
23. Material (s) of coachwork
24. Number of doors 4 Material (s) Steel, ~~4 Doors~~
25. Material (s) of bonnet Steel
26. Material (s) of boot lid Steel
27. Material (s) of rear-window Glass
28. Material (s) of windscreen Glass
29. Material (s) of front-door windows Glass
30. Material (s) of rear-door windows Glass
31. Sliding system of door windows Vertical, Manual
32. Material (s) of rear-quarter light

ACCESSORIES AND UPHOLSTERY

38. Interior heating : ~~yes~~ - no
39. Air-conditioning : ~~yes~~ - no
40. Ventilation : yes - ~~yes~~
41. Front seats, type of seats and upholstery Bucket, Textiles & vinyl
42. Weight of front seat (s), complete with supports and rails, out of the car :
2 x 12.7 kg lbs
43. Rear seats, type of seats and upholstery Bench, Textiles & vinyl
44. Front bumper, material (s) Steel Weight 6 kg lbs
45. Rear bumper, material (s) Steel Weight 6 kg lbs

WHEELS

50. Type Pressed Steel
51. Weight (per wheel, without tyre) 4.5" Rim 6.0 kg
5.0" Rim 7.2 lbs
52. Method of attachment 4 Wheel pins and Nuts
53. Rim diameter 330.2 mm 13.0 inches
54. Rim width 114 or 127 mm 4.5 or 5.0 inches

STEERING

60. Type Rack and Pinion
61. Servo-assistance : ~~yes~~ - no
62. Number of turns of steering wheel from lock to lock 2.9
63. In case of servo-assistance



Make Isuzu Motors Limited

Model

Isuzu PR 20S '67

F.I.A. Rec. No.

SUSPENSION

- 70. Front suspension (photogr. D), type Independent, Coil Spring, Wishbone type
- 71. Type of spring Coil
- 72. Stabiliser (if fitted) Torsion bar
- 73. Number of shockabsorbers 2 74. Type Hydraulic Telescopic
- 78. Rear suspension (photogr. E), type Independent, Diagonal Link
- 79. Type of spring Coil and Transverse Leaf
- 80. Stabiliser (if fitted)
- 81. Number of shockabsorbers 2 82. Type Hydraulic Telescopic

BRAKES (photographs F and G)

- 90. System Hydraulic
- 91. Servo-assistance (if fitted), type
- 92. Number of hydraulic master cylinders 1

	FRONT		REAR	
93. Number of cylinders per wheel	2		1	
94. Bore of wheel cylinder (s)	57.2	mm	22.2	mm
		in.		in.
Drum brakes				
95. Inside diameter		mm	203.2	mm
		in.		in.
96. Length of brake linings		mm	195.0	mm
		in.		in.
97. Width of brake linings		mm	37.1	mm
		in.		in.
98. Number of shoes per brake			2	
99. Total area per brake		mm ²	sq. in. 14,430	mm ²
				sq. in.
Disc brakes				
100. Outside diameter	237	mm		mm
		in.		in.
101. Thickness of disc	10	mm		mm
		in.		in.
102. Length of brake linings	60	mm		mm
		in.		in.
103. Width of brake linings	45	mm		mm
		in.		in.
104. Number of pads per brake	2			
105. Total area per brake	5,400	mm ²	sq. in.	mm ²
				sq. in.



Make Isuzu Motors Limited

Model Isuzu PR 20S '67

F.I.A. Rec. No.

ENGINE (photographs J and K)

- 130. Cycle 4
- 131. Number of cylinders 4
- 132. Cylinder arrangement In-line
- 133. Bore 79 mm 3.110 in. 134. Stroke 75 mm 2.953 in.
- 135. Capacity per cylinder 367.6 cm³ 22.43 cu. in.
- 136. Total cylinder-capacity 1471 cm³ 89.74 cu. in.
- 137. Material (s) of cylinder block Cast Iron
- 138. Material (s) of sleeves (if fitted)
- 139. Cylinder-head, material (s) Cast Iron Number fitted 1
- 140. Number of inlet ports 4 141. Number of exhaust ports 4
- 142. Compression ratio 8.5 : 1
- 143. Volume of one combustion chamber 49.0 cm³ cu. in.
- 144. Piston, material Aluminum 145. Number of rings 3
- 146. Distance from gudgeon pin centre line to highest point of piston crown 37.4 mm inches
- 147. Crankshaft : ~~stamped~~ / stamped 148. Type of crankshaft : integral /
- 149. Number of crankshaft main bearings 5 set
- 150. Material of bearing cap Cast Iron
- 151. System of lubrication : ~~dry sump~~ / oil in sump
- 152. Capacity, lubricant 3.2 ltrs pts quarts US
- 153. Oil cooler : ~~yes~~ / no
- 154. Method of engine cooling Water quarts US
- 155. Capacity of cooling system 5.7 ltrs pints
- 156. Cooling fan (if fitted), dia. 32 cm inches
- 157. Number of blades of cooling fan 4

Bearings

- 158. Crankshaft main, type Plain Dia. 56 mm in.
- 159. Connecting rod big end, Plain Dia. 49 mm in.

Weights

- 160. Flywheel (clean) 10.4 kg lbs
- 161. Flywheel with clutch (all turning parts) 16.5 kg lbs
- 162. Crankshaft 15.3 kg lbs
- 163. Connecting rod 0.56 kg lbs
- 164. Piston with rings and pin 0.46 kg lbs



Make Isuzu Motors Limited

Model Isuzu PR 20S '67

F.I.A. Rec. No.

FOUR STROKE ENGINES

170. Number of camshafts 1 171. Location Cylinder Block
172. Type of camshaft drive Chain Drive
173. Type of valve operation Push Rod

⁸
INLET (see page 4) *

180. Material(s) of inlet manifold Alminum
181. Diameter of valves 38 mm 1.496 inches
182. Max. valve lift 8.95mm 0.352 in. 183. Number of valve springs 2
184. Type of spring Coil 185. Numbdr of valves per cylinder 1
186. Tappet clearance for checking timing (cold) 0.25 mm inches
187. Valves open at (with tolerance for tappet clearance indicated) 15° BTDC ± 3°
188. Valves close at (with tolernce for lappet clearance indicated) 73° ATDC ± 3°
189. Air filler, type

⁸
EXHAUST (see page 4)

195. Material (s) of exhaust manifold Steel
196. Diameter of valves 30 mm 1.181 inches
197. Max. valve lift 8.95 mm 0.352 in. 198. Number of valve springs 2
199. Type of spring Coil 200. Number of valves per cylinder 1
201. Tappet clearance for checking timing (cold) 0.35 mm inches
202. Valves open at (with tolerance for tappet clearance indicated) 55° BBDC ± 3°
203. Valves close at (with tolerance for tappet clearance indicated) 29° ATDC ± 3°

CARBURETION (photograph N)

210. Number of carburettors fitted 2 211. Type SU type
212. Make Hitachi 213. Model HJD 38W
214. Number of mixture passages per caburettor 1
215. Flange hold diameter of exit port(s) of carburetteor 38 mm in.
216. Minimum dimensions of mixture pasage(s) with piston at max. height (example: SU)
29 mm inches

INJECTION (if fitted)

220. Make of pump 221. Number of plungers
222. Model or type of pump 223. Total number of injectors
224. location of injectors
225. Minimum diameter of inlet pipe mm inches

*) for additional information concerning two-stroke engines and super-charged engines see page 13.



Make Isuzu Motors Limited

Model Isuzu PR 20S '67

F. I. A. Rec. No.

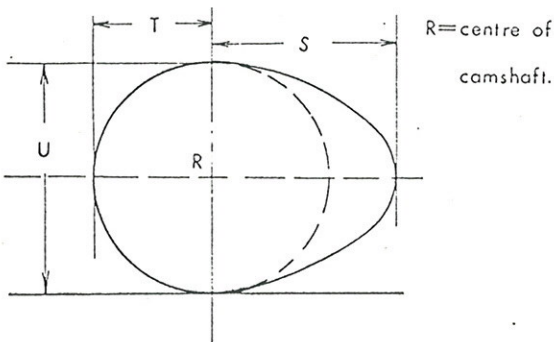
ENGINE ACCESSORIES

- 230. Fuel pump : mechanical *6/4/1/1/6/6/6/6/6/6*
- 231. No. fitted 1
- 232. Type of ignition system Make and Break Ignition
- 233. No. of distributors 1
- 234. No. of ignition coils 1
- 235. No. of spark plugs per cylinder 1
- 236. Generator, type *7/7/6/6*/alternator-number fitted 1
- 237. Method of drive V belt drive
- 238. Voltage of generator 12 volts
- 239. Battery, number 1
- 240. location Engine Room
- 241. Voltage of battery 12 volts

ENGINE AND CAR PERFORMANCES (as declared by manufacturer in catalogue)

- 250. Max. engine output 77 PS (type of horsepower: JIS) at 5,400 rpm
- 251. Maximum rpm 5,400 output at that figure 77 PS
- 252. Maximum torque 12.0Kg-m at 4,200 rpm
- 253. Maximum speed of the car 150 km/hour miles / hour

255.



Inlet cam

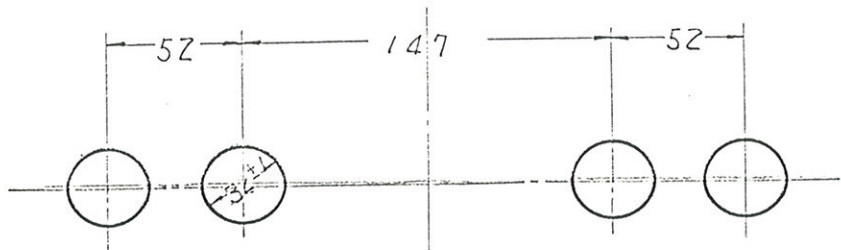
S =	22.2 mm	0.876	inches
T =	15.8 mm	0.622	inches
U =	31.6 mm	1.245	inches

Exhaust cam

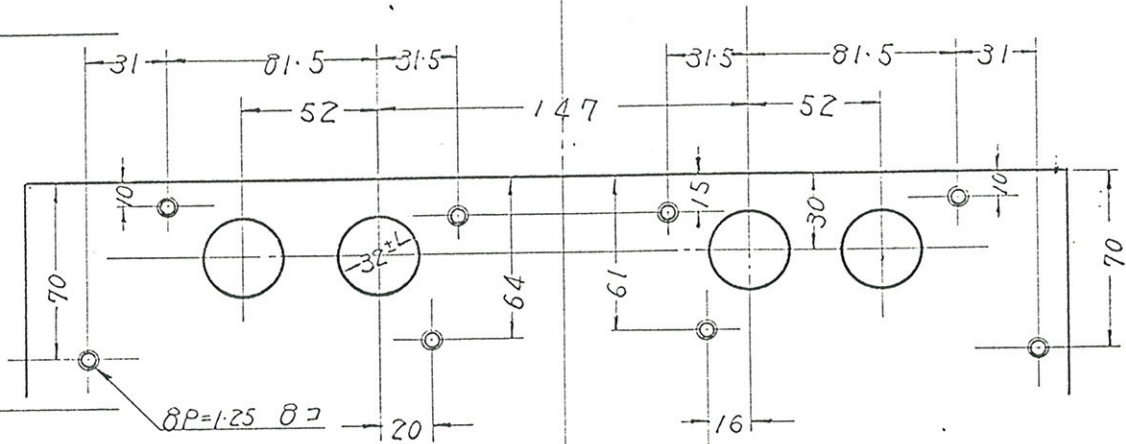
S =	22.3 mm	0.878	inches
T =	15.8 mm	0.622	inches
U =	31.7 mm	1.248	inches



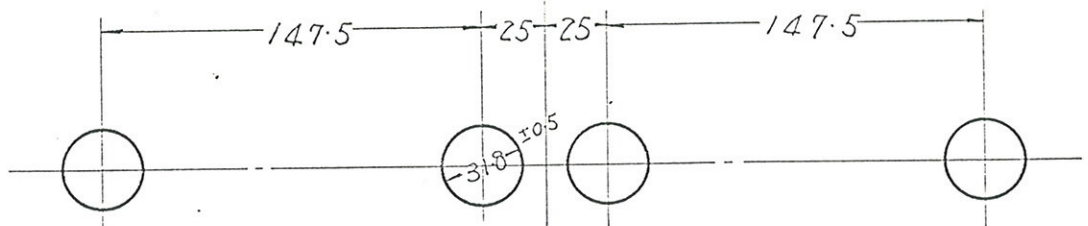
Drawing inlet manifold ports, side of cylinder-head. Indicate scale or dimensions and manufacturing tolerance.



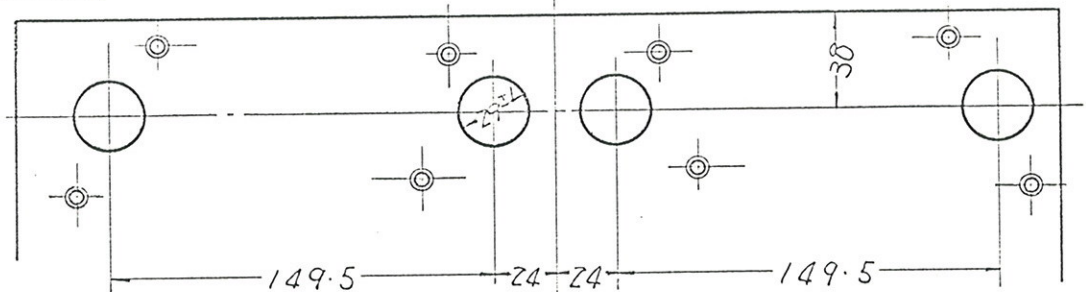
Drawing of entrance to inlet port of cylinder-head. Indicate scale or dimensions and manufacturing tolerance.



Drawing exhaust manifold ports, side of cylinder-head. Indicate scale or dimensions and manufacturing tolerance.



Drawing of exit to exhaust port of cylinderhead. Indicate scale or dimensions and manufacturing tolerance.



unit ; mm



Make Isuzu Motors Limited

Model Isuzu PR 20S '67

F.I.A. Rec. No.

DRIVE TRAIN

CLUTCH

260. Type of clutch Dry Plate 261. No. of plates 1
 262. Dia. of clutch plates 20.3 cm inches
 263. Dia. of linings, inside 14.6 cm in. outside 20.3 cm in.
 264. Method of operating clutch Mechanical

GEAR BOX (photograph H)

270. Manual type, make Isuzu Method of operation Mechanical
 271. No. of gear-box ratios forward 4 272. Synchronized forward ratios 4 (1, 2, 3, 4)
 273. Location of gear-shift Floor
 274. Automatic, make type
 275. No. of forward ratios 276. Location of gear-shift

277.	Manual		Automatic		Alternative manual/automatic			
	Ratio	No. teeth	Ratio	No. teeth	Ratio	No. teeth	Ratio	No. teeth
1	3.507	$\frac{29}{18} \times \frac{37}{17}$			3.207	$\frac{28}{19} \times \frac{37}{17}$	2.487	$\frac{27}{20} \times \frac{35}{19}$
2	2.175	$\frac{29}{18} \times \frac{27}{20}$			1.989	$\frac{28}{19} \times \frac{27}{20}$	1.671	$\frac{27}{20} \times \frac{26}{21}$
3	1.418	$\frac{29}{18} \times \frac{22}{25}$			1.356	$\frac{28}{19} \times \frac{23}{25}$	1.242	$\frac{27}{20} \times \frac{23}{25}$
4	1.000				1.000		1.000	
5								
6								
reverse	3.927	$\frac{29}{18} \times \frac{39}{16}$			3.592	$\frac{28}{19} \times \frac{39}{16}$	3.291	$\frac{27}{20} \times \frac{39}{16}$

278. Overdrive, type
 279. Forward gears on which overdrive can be selected
 280. Overdrive ratio

FINAL DRIVE

290. Type of final drive Hypoid Bevel
 291. Type of differential Bevel
 292. Type of limited slip differential (if fitted) ~~Mechanical~~
 293. Final drive ratio 3.727 or 4.100 or 4.300 or 4.625
 Number of teeth 41/11 or 41/10 or 43/10 or 37/8



Make Isuzu Motors Limited

Model Isuzu PR 20S '67

F.I.A. Rec. No.

IMPORTANT- The conformity of the car with the following items of the present recognition form is to be disregarded during the scrutineering, when the vehicle has been entered in group 2 (Touring cars) or 3 (Grand Touring cars) : 41, 72, 80, 91, 142, 143, 144, 145, 146, 153, 156, 157, 160, 161, 162, 163, 164, 182, 184, 186, 187, 188, 189, 199, 201, 202, 203, 212, 213, 215, 216, 222, 225, 230, 250, 251, 252, 253, and photographs I, M and N.

During the scrutineering of cars entered in group 4 (Sportscars) only the following items of the present recognition form are to be taken into consideration : 1, 2, 3, 9, 20, 21, 22, 23, 24, 25, 26, 70, 71, 78, 79, 90, 130, 131, 132, 133, 134, 135, 136, 137, 138, 139, 140, 141, 147, 148, 149, 150, 158, 159, 170, 171, 172, 173, 185, 200, 270, 271, 274, 275, 290, 291, 292 and photographs A, B, D, E, F, G, H, J, K, and O.

Optional equipment affecting preceding information. This to be stated together with reference number.

CAPACITY
7. Capacity of fuel tank 90 ltrs 23.8 Gallon US
FINAL DRIVE
292. Type of limited slip differential Friction



Make Isuzu Motors Limited

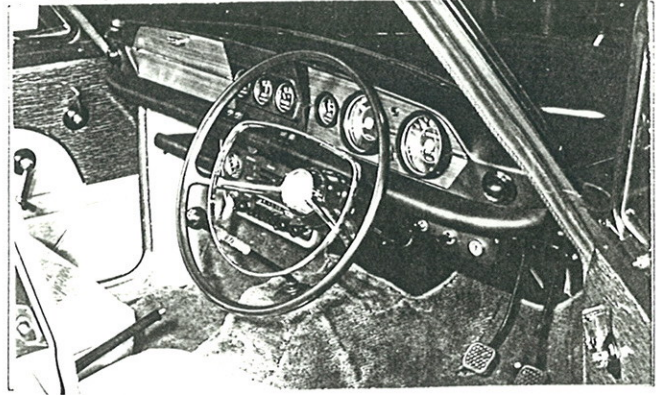
Model Isuzu PR 20S '67 F.I.A. Rec. No.

Photograph

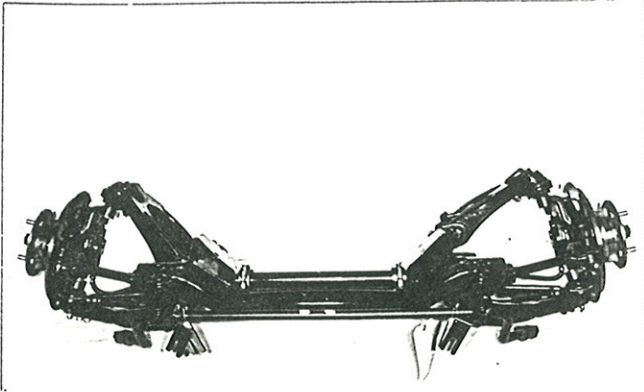
B, 3/4 view of car from rear



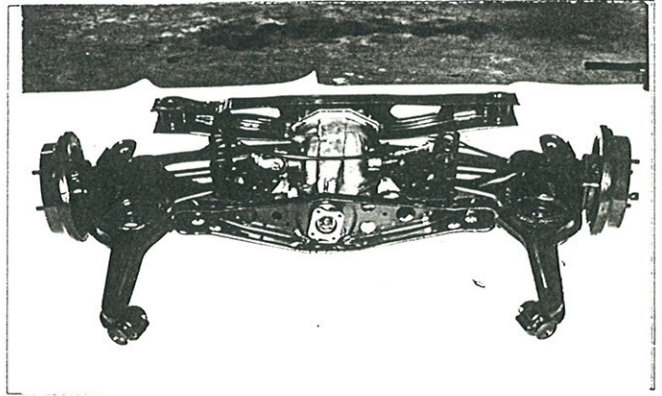
C, interior view of car through driver's door (open or removed) with dashboard



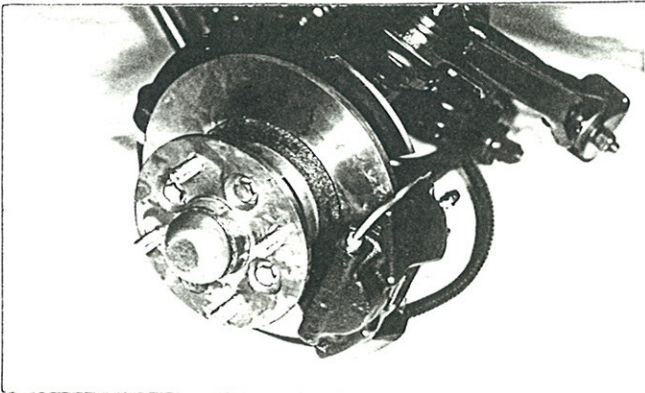
D, front axle complete, removed from car. Without wheels.



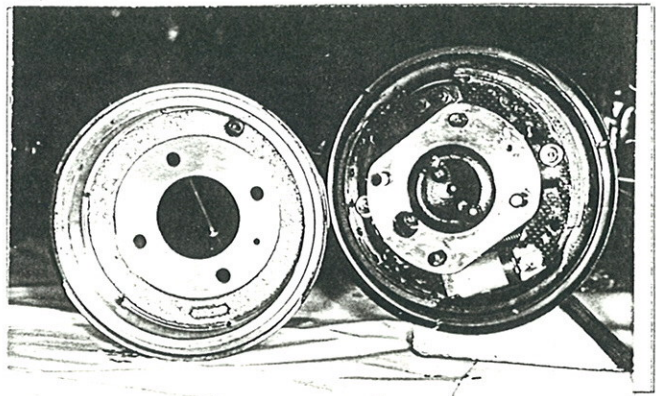
E, Rear axle complete without wheels, removed from car.



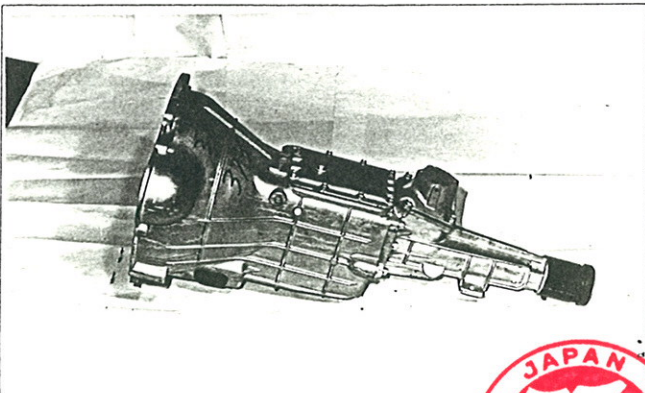
F, front brake, drum removed or disc with calipers



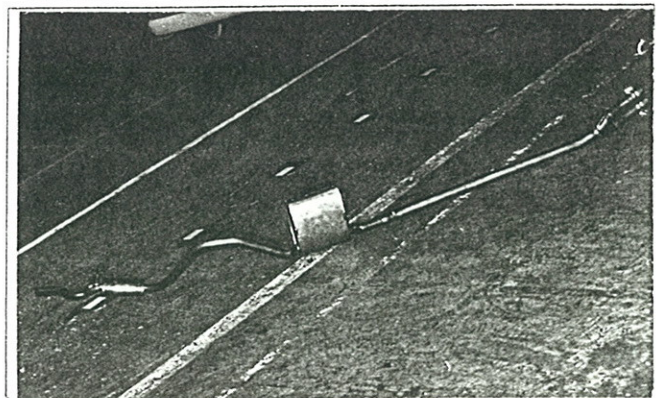
G, rear brake, drum removed or disc with calipers



H, gear-box, view from side

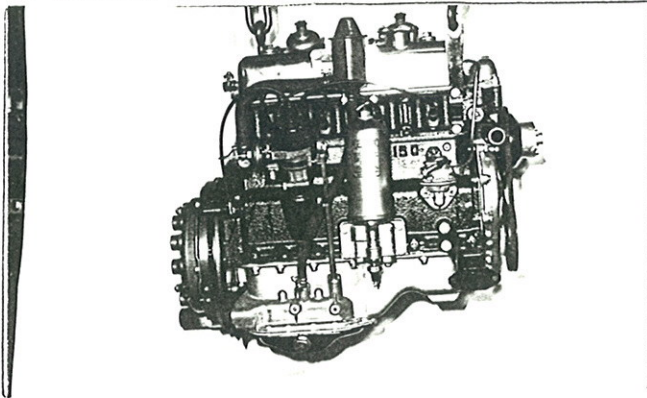


I, silencer + exhaust pipes after exhaust manifold.



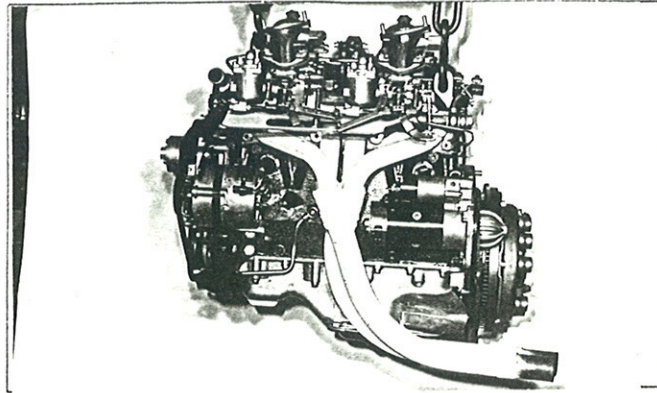
Make Isuzu Motors Limited

J, engine unit out of car, from right. With clutch and accessories but without air filter nor gear-box.

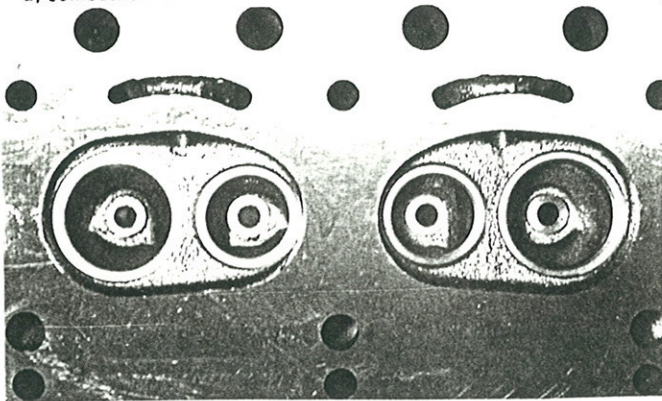


Model Isuzu PR 20S '67 F.I.A. Rec. No

K, engine unit out of car, from left. With clutch and accessories but without gear-box nor air filter.



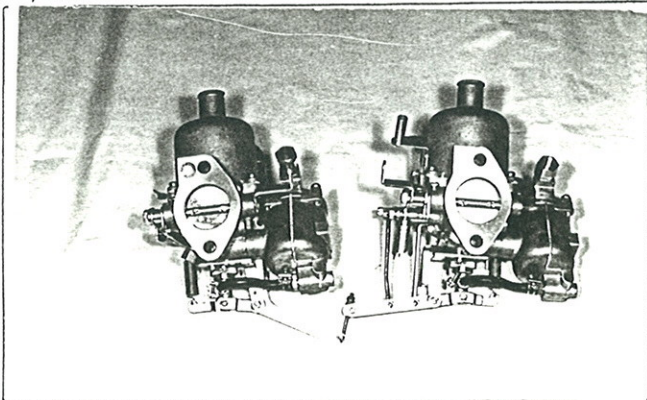
L, combustion chamber



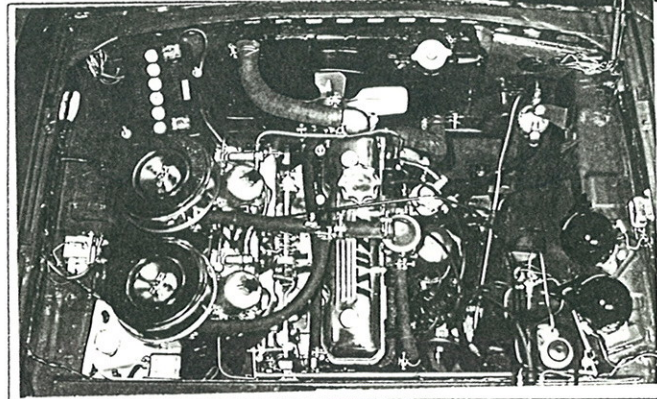
M, piston crown



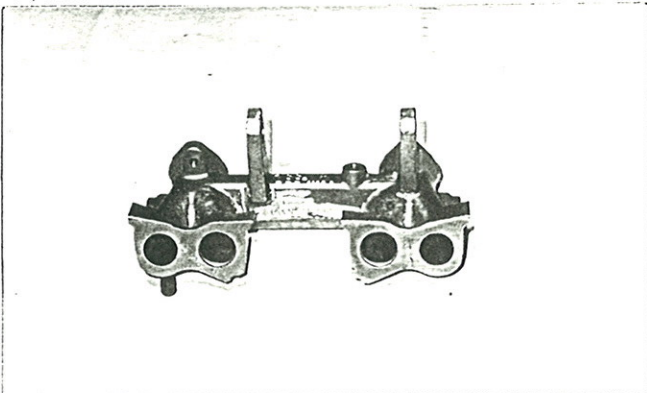
N, Carburettor (view from side of manifold)



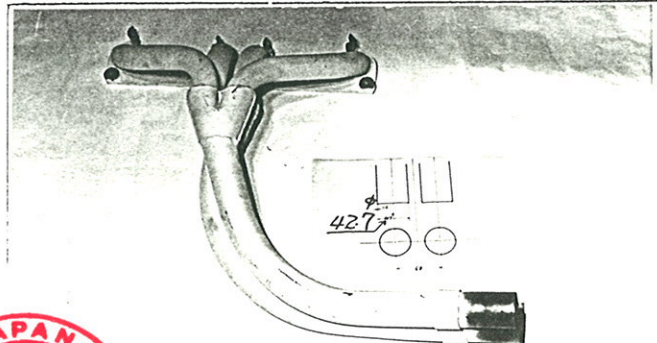
O, engine in car with all accessories, bonnet open or removed



P, inlet manifold



Q, exhaust manifold



Make Isuzu Motors Limited

Model Isuzu PR 20S '67

F. I. A. Rec. No.

TWO STROKE ENGINES

- 300. System of cylinder scavenging
- 301. Type of lubrication
- 302. Inlet ports, length measured around cylinder wall mm inches
- 303. Height inlet port mm in. 304. Area mm² sq. in.
- 305. Exhaust ports, length measured around cylinder wall mm inches
- 306. Height exhaust port mm in. 307. Area mm² sq. in.
- 308. Transfer port, length measured around cylinder wall mm inches
- 309. Height transfer port mm in. 310. Area. mm² sq. in.
- 311. Piston ports, length measured around piston mm inches
- 312. Height piston port mm in. 313. Area mm² sq. in.
- 314. Method of precompression 315. Precompression cyl.: yes /no
- 316. Bore mm inches 317. Stroke mm inches
- 318. Distance from top of cyl. block to highest point of exhaust port : mm inches
- 319. Distance from top of cyl. block to lowest point of inlet port : mm inches
- 320. Distance from top of cyl. block to highest point of transfer port : mm inches
- 321. Drawing of cylinder ports.

330. Supercharging—state full details hereafter :

JAPAN AUTOMOBILE FEDERATION

難波清治

Y a s u h a r u N a n b a

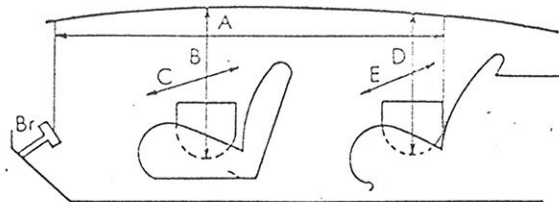


Isuzu Motors Limited

DIMENSIONS OF INTERIOR
(Conform to Art. 253 b of Appendix J)

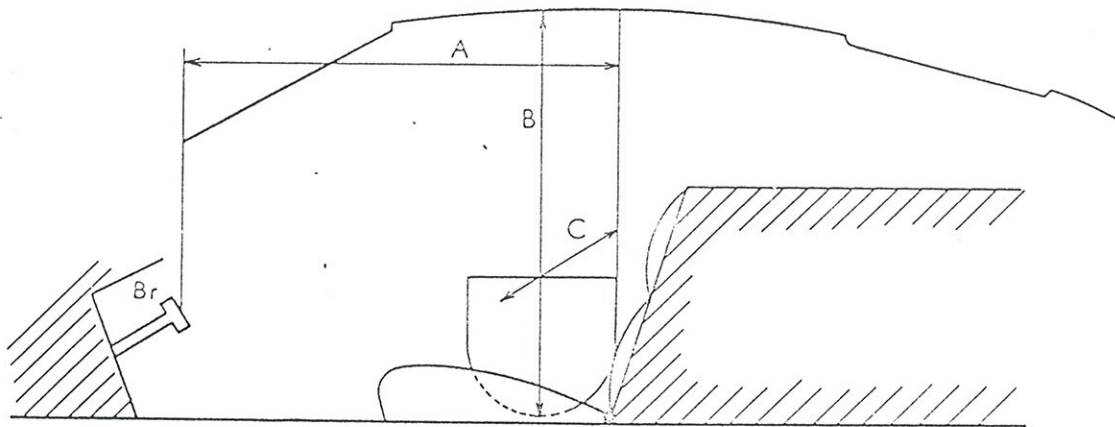
Isuzu PR 20S '67

For four seaters :



Minimum Dimensions				
A	B	C	D	E
167 cm	92 cm	122 cm	90 cm	122 cm

For two seaters :



Minimum Dimensions		
A	B	C

